

**NETGEAR®**

# User Manual

---

## Orbi WiFi 6 Dual-band Mesh System

Orbi Router Model RBR350  
Orbi Satellite Model RBS350

December 2021  
202-12112-02

**NETGEAR, Inc.**  
350 E. Plumeria Drive  
San Jose, CA 95134, USA

### **Support and Community**

Visit [netgear.com/support](https://www.netgear.com/support) to get your questions answered and access the latest downloads.

You can also check out our NETGEAR Community for helpful advice at [community.netgear.com](https://community.netgear.com).

### **Regulatory and Legal**

Si ce produit est vendu au Canada, vous pouvez accéder à ce document en français canadien à <https://www.netgear.com/support/download/>.

(If this product is sold in Canada, you can access this document in Canadian French at <https://www.netgear.com/support/download/>.)

For regulatory compliance information including the EU Declaration of Conformity, visit <https://www.netgear.com/about/regulatory/>.

See the regulatory compliance document before connecting the power supply.

For NETGEAR's Privacy Policy, visit <https://www.netgear.com/about/privacy-policy>.

By using this device, you are agreeing to NETGEAR's Terms and Conditions at <https://www.netgear.com/about/terms-and-conditions>. If you do not agree, return the device to your place of purchase within your return period.

### **Trademarks**

© NETGEAR, Inc., NETGEAR, and the NETGEAR Logo are trademarks of NETGEAR, Inc. Any non-NETGEAR trademarks are used for reference purposes only.

# Contents

## Chapter 1 Overview

- Orbi router overview.....8
  - Orbi router hardware features.....8
  - Orbi router front LED behavior.....9
  - Orbi router Power LED behavior.....9
- Orbi satellite overview.....10
  - Orbi satellite hardware features.....10
  - Orbi satellite front LED behavior.....11
  - Orbi satellite Power LED behavior.....11
- Connect your Orbi router.....12
- Place your Orbi satellite.....13
- Sync your Orbi satellite with your Orbi router.....13

## Chapter 2 Connect to the Network and Access the Router

- Connect to the network.....15
  - Wired connection.....15
  - WiFi connection.....15
  - WiFi connection using WPS.....16
- Types of logins.....16
- Router and satellite labels.....16
- Set up and manage with the NETGEAR Orbi app.....17
- Use a web browser to access the router.....18
  - Use the automatic Internet setup option.....18
  - Log in to the Orbi router web interface.....20
- Change the language.....20

## Chapter 3 Specify Your Internet Settings

- Use the Setup Wizard.....22
- Manually set up the Internet connection.....22
  - Specify an Internet connection without a login.....22
  - Specify an Internet connection that uses a login.....24
- Requirements for entering IPv6 addresses.....25
  - Specify IPv6 Internet connections.....26
  - Use auto detection for an IPv6 Internet connection.....27
  - Use auto configuration for an IPv6 Internet connection.....28
  - Set up an IPv6 6to4 tunnel Internet connection.....30

Set up an IPv6 6rd tunnel Internet connection.....31  
Set up an IPv6 pass-through Internet connection.....33  
Set up an IPv6 fixed Internet connection.....34  
Set up an IPv6 DHCP Internet connection.....35  
Set up an IPv6 PPPoE Internet connection.....37  
Change the MTU size.....39

**Chapter 4 Control Access to the Internet**

Activate and manage NETGEAR Armor using the Orbi app.....42  
Allow or block access to your network.....42  
Use keywords to block Internet sites.....43  
Delete keywords that are used to block Internet sites.....44  
Avoid blocking on a trusted computer.....45  
Block services from the Internet.....46  
Manage network access control lists.....47  
Schedule when to block Internet sites and services.....48  
Set up security event email notifications.....49

**Chapter 5 Specify Network Settings**

View or change WAN settings.....52  
Manage Dynamic DNS.....53  
    Set up a new Dynamic DNS account.....53  
    Specify a DNS account that you already created.....54  
    Change the Dynamic DNS settings.....55  
Set up a default DMZ server.....56  
Change the router’s device name.....57  
Change the LAN TCP/IP settings.....57  
Use the router as a DHCP server.....59  
Disable the DHCP server feature in the router.....60  
Manage reserved LAN IP addresses.....61  
    Reserve an IP address.....61  
    Edit a reserved IP address.....62  
    Delete a reserved IP address entry.....62  
Manage custom static routes.....63  
    Set up a static route.....63  
    Edit a static route.....64  
    Delete a static route.....65  
Specify basic WiFi settings.....66  
Change the WiFi password or security level.....67  
Set up a guest WiFi network.....68  
Change your region.....69  
Use the router as a WiFi access point.....69  
Set up router mode.....71  
Generate a new backhaul password.....71

Set up a bridge for a port group or VLAN tag group.....72  
    Set up a bridge for a port group.....72  
    Set up a bridge for a VLAN tag group.....73  
Improve network connections with Universal Plug and Play.....74

**Chapter 6 Manage Your Network**

Update the router and satellite firmware.....78  
    Check for firmware updates.....78  
    Manually update firmware.....79  
    Manually update satellite firmware.....79  
    Manually update router firmware.....80  
Change the admin password.....81  
Enable admin password reset.....81  
Reset the admin password.....82  
View router status and usage information.....83  
Display Internet port statistics.....83  
Check the Internet connection status.....84  
View the satellite status.....85  
View and manage logs of router activity.....86  
View devices connected to the network or edit device  
information.....87  
    View devices connected to the network.....87  
    Edit device information on the Attached Devices page.....88  
View satellites connected to the network or edit satellite  
information.....88  
    View satellites connected to the network.....88  
    Edit satellite information that displays on the Attached Devices  
page.....89  
Monitor Internet traffic.....90  
Set your time zone, adjust for daylight saving time, or change the  
NTP server.....91  
Manage the router configuration file.....92  
    Back up settings.....92  
    Erase the current configuration settings.....93  
    Restore configuration settings.....94  
Access your Orbi network from anywhere using the Orbi app...94

**Chapter 7 Customize Internet Traffic Rules for Ports**

Manage port forwarding to a local server.....96  
    Set up port forwarding to a local server.....96  
    Add a custom port forwarding service.....97  
    Edit a port forwarding service.....98  
    Delete a port forwarding entry.....99  
    Application example: Make a local web server public.....99

How the router implements the port forwarding rule.....100  
Manage port triggering.....100  
    Add a port triggering service.....101  
    Disable port triggering or change the time-out period.....102  
    Application example: Port triggering for Internet Relay Chat.102

**Chapter 8 Use VPN to Access Your Network**

Set up a VPN connection.....105  
Specify VPN service in the router.....105  
Install OpenVPN software.....106  
    Install OpenVPN software on your Windows-based computer.106  
    Install OpenVPN software on your Mac computer.....109  
    Install OpenVPN software on an iOS device.....110  
    Install OpenVPN software on an Android device.....110  
Use a VPN tunnel on your Windows-based computer.....111  
Use VPN to access your Internet service at home.....113  
    Set up VPN client Internet access in the router.....113  
Block VPN client Internet access in the router.....114  
Use a VPN tunnel to access your Internet service at home.....114

**Chapter 9 Troubleshooting**

Quick tips.....117  
    Sequence to restart your network.....117  
    WiFi settings.....117  
    Network settings.....117  
The router and satellite do not sync.....117  
You cannot log in to the router.....118  
You cannot access the Internet.....119  
Troubleshoot Internet browsing.....120  
Troubleshoot PPPoE.....121  
Troubleshoot WiFi connectivity.....121  
Troubleshoot your network using the ping utility.....122  
    Test the LAN path to your router.....122  
    Test the path from your computer to a remote device.....123

**Appendix A Factory Settings and Technical Specifications**

Factory settings.....126  
    Factory settings for Orbi router model RBR350.....126  
    Factory settings for Orbi satellite model RBS350.....128  
Technical specifications.....130  
    Technical specifications for Orbi router model RBR350.....130  
    Technical specifications for Orbi satellite model RBS350.....131

# 1

## Overview

---

The Orbi WiFi 6 Dual-band Mesh System creates dedicated high-speed WiFi connections to your Internet service. The Orbi router (model RBR350) connects to your modem or gateway. The Orbi satellite (model RBS350) extends the WiFi signal throughout your home.

This manual describes how to manage your Orbi WiFi 6 Dual-band Mesh System from your Orbi router web interface. You can manage your Orbi satellite from the Orbi router web interface.

This chapter contains the following sections:

- [Orbi router overview](#)
- [Orbi satellite overview](#)
- [Connect your Orbi router](#)
- [Place your Orbi satellite](#)
- [Sync your Orbi satellite with your Orbi router](#)

For more information about the topics covered in this manual, visit the support website at <https://www.netgear.com/support/>.

**Note:** This manual might refer to the Orbi router (model RBR350) as the *router* and refer to the Orbi satellite (model RBS350) as the *satellite*.

# Orbi router overview

The following sections are an overview of the Orbi router hardware features and LED behavior.

## Orbi router hardware features

The following figures shows the Orbi router hardware features.

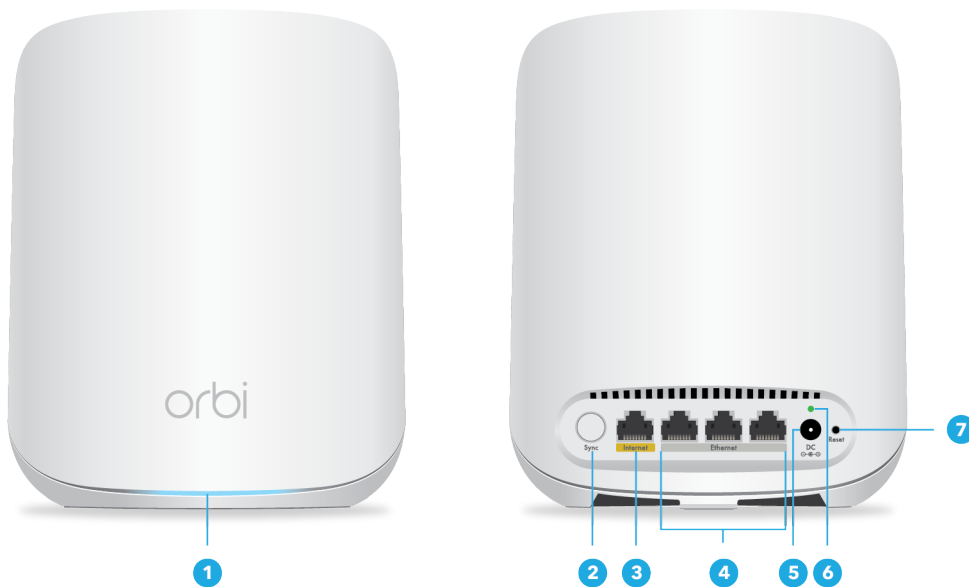


Figure 1. Orbi router front and back views

1. **Router LED.** The router LED on the front of the router lights to show the router status. For more information, see [Orbi router front LED behavior](#) on page 9.
2. **Sync button.** Use the **Sync** button to sync your router to your satellite if they don't sync automatically.
3. **Internet port.** Connect your Internet modem, such as a cable modem or DSL modem, to the router's Internet port.
4. **Ethernet ports.** You can use these ports to connect Ethernet devices, such as a computer or gaming console, to your router.
5. **DC Power connector.** Connect the power adapter that came in your product package to the DC power connector.



6. **Power LED.** The Power LED lights when power is supplied to the router. For more information, see [Orbi router Power LED behavior](#) on page 9.
7. **Reset button.** Pressing the **Reset** button resets the router. If the **Reset** button is pressed for at least 10 seconds and the Power LED blinks, the router returns to its factory settings.

## Orbi router front LED behavior

The router LED is located on the front of the Orbi router. Use this LED to determine the router status.

The following table describes the router LED behavior.

Table 1. Router LED behavior

LED color	Description
Pulsing white	The router is booting or someone pressed the <b>Sync</b> button.
Solid white	The router is resetting to its factory default settings.
Solid magenta	The router cannot connect to the Internet.
Off	The router finished booting and is working normally.

## Orbi router Power LED behavior

A Power LED is located on the back of the Orbi router.

The following table describes the router's Power LED behavior.

Table 2. Router Power LED behavior

LED color	Description
Solid green	Power is on.
Blinking amber	The router is resetting to its factory default settings.
Blinking red	The router's firmware is corrupted.
Off	Power is not supplied to the router.

# Orbi satellite overview

The following sections are an overview of the Orbi satellite hardware features and LED behavior.

## Orbi satellite hardware features

The following figures shows the Orbi satellite hardware features.

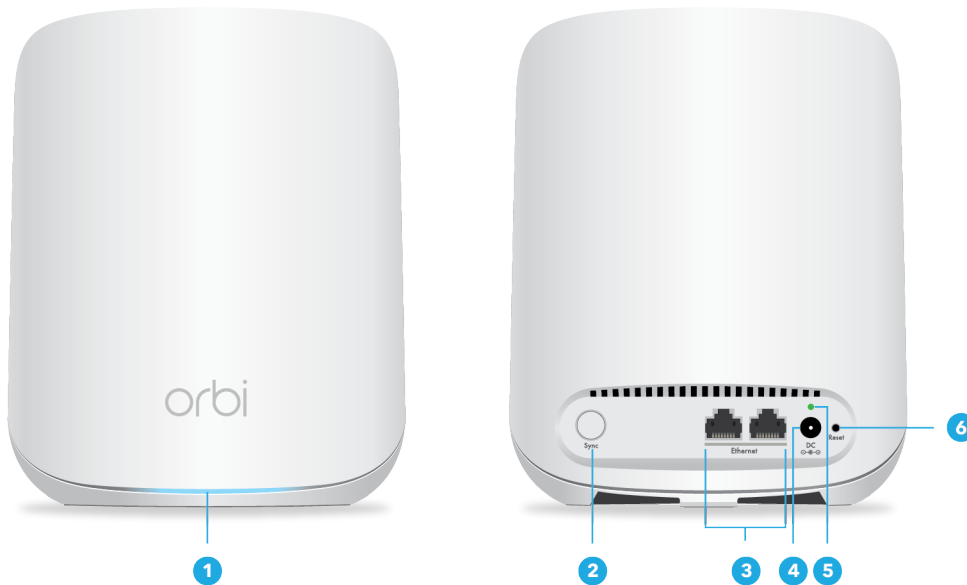


Figure 2. Orbi satellite front and back views

1. **Satellite LED.** The satellite LED lights to show the satellite status. For more information, see [Orbi satellite front LED behavior](#) on page 11.
2. **Sync button.** Use the **Sync** button to sync your satellite to your router if they don't sync automatically.
3. **Ethernet ports.** You can use these ports to connect Ethernet devices, such as a computer or gaming console, to your satellite.
4. **DC Power connector.** Connect the power adapter that came in your product package to the DC power connector.
5. **Power LED.** The Power LED lights when power is supplied to the satellite. For more information, see [Orbi satellite Power LED behavior](#) on page 11.
6. **Reset button.** Pressing the **Reset** button resets the satellite. If the **Reset** button is pressed for at least 10 seconds and the Power LED blinks, the satellite returns to its factory settings.

## Orbi satellite front LED behavior

The satellite LED is located on the front of the Orbi satellite. Use this LED to determine the satellite status.

The following table describes the satellite LED behavior.

Table 3. Satellite LED behavior

LED color	Description
Pulsing white	The satellite is booting.
Blue	The connection between the satellite and router is good. The LED lights blue for three minutes and then turns off.
Amber	The connection between the satellite and router is fair. The LED lights amber for three minutes and then turns off.
Magenta	The satellite failed to sync with the router.
Off	The satellite synced with the router and is working normally.

## Orbi satellite Power LED behavior

A Power LED is located on the back of the Orbi satellite.

The following table describes the satellite's Power LED behavior.

Table 4. Satellite Power LED behavior

LED color	Description
Solid green	Power is on.
Blinking amber	The satellite's firmware is resetting to its factory default settings.
Blinking red	The satellite's firmware is corrupted.
Off	Power is not supplied to the satellite.

# Connect your Orbi router

Power on your router and connect it to a modem.



Figure 3. Connect the router

## To cable your router:

1. Unplug your modem's power, leaving the modem connected to the wall jack for your Internet service.  
If your modem uses a battery backup, remove the battery.
2. Plug in and turn on your modem.  
If your modem uses a battery backup, put the battery back in.
3. Connect your modem to the Internet port on your router with the Ethernet cable that came with your router.
4. Connect the power adapter to your router and plug the power adapter into an outlet.
5. If the Power LED does not light, make sure that the power adapter is properly connected to your router and power outlet.

# Place your Orbi satellite

Your Orbi satellite must be within range of your Orbi router's WiFi signal for it to sync with your router. Use the satellite LED on the front of the satellite to help you determine where to place your satellite.

# Sync your Orbi satellite with your Orbi router

The Orbi satellite that comes with your Orbi router is preset to automatically find and sync to your Orbi router's WiFi signal.

## To sync your satellite:

1. Place your satellite.

For more information, see [Place your Orbi satellite](#) on page 13.

2. Connect the satellite to a power source.

The satellite LED pulses white. The satellite automatically finds the Orbi router's WiFi signal and attempts to sync to the Orbi router.

The satellite LED lights one of the following colors:

- **Blue.** The Orbi router and satellite successfully synced, and the connection between the router and satellite is good.
- **Amber.** The connection with the router is fair. We recommend that you move the Orbi satellite closer to the Orbi router and try again.

3. If the satellite LED lights magenta, do the following:

- a. Unplug your Orbi satellite, move the satellite closer to the router.
- b. Plug the satellite back in and wait two minutes for the LED to turn blue or amber.

4. If the satellite LED still does not turn blue or amber, do the following:

- a. Press the **Sync** button on the back of the router.
- b. Within two minutes, press the **Sync** button on the back of the satellite.
- c. Wait two minutes for the LED to turn blue or amber.

# 2

## Connect to the Network and Access the Router

---

This chapter contains the following sections:

- [Connect to the network](#)
- [Types of logins](#)
- [Router and satellite labels](#)
- [Set up and manage with the NETGEAR Orbi app](#)
- [Use a web browser to access the router](#)
- [Change the language](#)

# Connect to the network

You can connect to the Orbi network through a wired or WiFi connection. If you set up your computer to use a static IP address, change the settings so that it uses Dynamic Host Configuration Protocol (DHCP).

## Wired connection

You can connect your computer to the router using an Ethernet cable and join the router's local area network (LAN). The computer must have an Ethernet port.

### **To connect your computer to the router with an Ethernet cable:**

1. Make sure that the router is receiving power (its Power LED is lit).
2. Connect an Ethernet cable to an Ethernet port on your computer.
3. Connect the other end of the Ethernet cable to one of the router's Ethernet ports.  
Your computer connects to the local area network (LAN). A message might display on your computer screen to notify you that an Ethernet cable is connected.

## WiFi connection

If you're installing your Orbi router for the first time, you can connect to the router's WiFi network by scanning the QR code on your router with the camera app on your mobile device. To scan the QR code with your camera app, your mobile device must have iOS version 11 or later or Android version 10 or later.

You can also manually find and select the Orbi router's WiFi network from your WiFi-enabled computer or mobile device.

### **To find and select the WiFi network:**

1. Make sure that the router or satellite is receiving power (its Power LED is lit).
2. On your WiFi-enabled computer or mobile device, find and select the WiFi network.  
The WiFi network name is on the router label. The WiFi network name is the same for the router and the satellite in the Orbi WiFi System.

**Note:** If you bought the router and the satellite separately, their default WiFi network names are different.

3. Join the WiFi network and enter the WiFi password.  
The password is on the router label.  
Your WiFi-enabled computer or mobile device connects to the WiFi network.

## WiFi connection using WPS

You can connect to the router's WiFi network with Wi-Fi Protected Setup (WPS) or you can find and select the WiFi network.

### To use WPS to connect to the WiFi network:

1. Make sure that the router is receiving power (its Power LED is lit).
2. Check the WPS instructions for your computer or WiFi device.
3. Press the **Sync** button on the router.
4. Within two minutes, on your WiFi-enabled computer or mobile device, press its **WPS** button or follow its instructions for WPS connections.  
Your computer or mobile device connects to the WiFi network.

## Types of logins

Separate types of logins serve different purposes. It is important that you understand the difference so that you know which login to use when.

Types of logins:

- **ISP login.** The login that your Internet service provider (ISP) gave you logs you in to your Internet service. Your service provider gave you this login information in a letter or some other way. If you cannot find this login information, contact your service provider.
- **WiFi network name and network key.** Your router and satellite are preset with the same WiFi network name (SSID) and network key (password) for WiFi access. This information is on the router label and the satellite label.
- **NETGEAR account login.** The free NETGEAR account that you need to register your router and manage your subscriptions. If you do not own a NETGEAR account, you can create one using the NETGEAR Orbi app.
- **Router login.** This logs you in to the router interface from a web browser as admin.

## Router and satellite labels

The Orbi router and satellite labels show the router's or satellite's MAC address and serial number. The labels also include QR codes you can scan during setup to connect



to the Orbi setup network. Following are examples of what the router and satellite labels might look like:

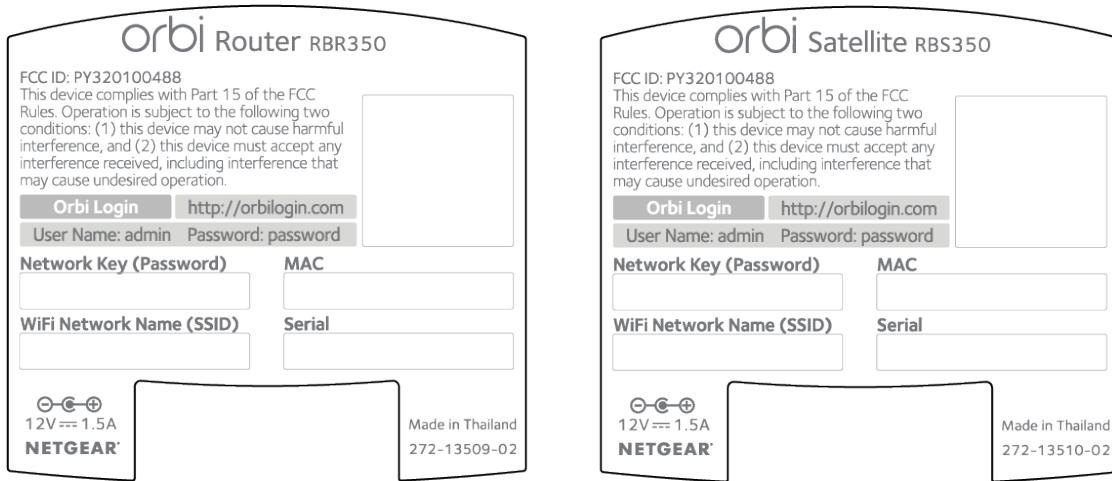


Figure 4. Router label (left) and satellite label (right)

## Set up and manage with the NETGEAR Orbi app

You can use the NETGEAR Orbi app to set up and access your Orbi network.

To find the app, scan a QR code or search for NETGEAR Orbi in the Apple App Store or Google Play Store.

For more information about the Orbi app, visit <https://www.netgear.com/home/apps-services/orbi-app>.



**Note:** If you do not want to use the NETGEAR Orbi app, you can use the Orbi router web interface to set up your Orbi devices. For more information about how to access your Orbi router web interface, see [Use a web browser to access the router](#) on page 18.

To set up your Orbi WiFi system with the Orbi app:

1. Download the NETGEAR Orbi app on your mobile device.
2. On your mobile device, open the WiFi connection manager.
3. Locate and connect your mobile device to your Orbi WiFi network.  
Your preset Orbi WiFi network and password displays on the Orbi router label. You can change the WiFi credentials after the setup.
4. Launch the Orbi app and follow the setup instructions.

## Use a web browser to access the router

When you connect to the network (either with WiFi or with an Ethernet cable), you can use a web browser to access the router to view or change its settings. The first time you access the router, the NETGEAR installation assistant automatically checks to see if your router can connect to your Internet service.

## Use the automatic Internet setup option

You can set up your router automatically, or you can use a web browser to access the router and set up your router manually. Before you start the setup process, get your ISP information and make sure that the computers and devices in the network use the settings described here.

When your Internet service starts, your Internet service provider (ISP) typically gives you all the information needed to connect to the Internet. For DSL service, you might need the following information to set up your router:

- The ISP configuration information for your DSL account
- ISP login name and password
- Fixed or static IP address settings (special deployment by ISP; this setting is rare)

If you cannot locate this information, ask your ISP to provide it. When your Internet connection is working, you no longer need to launch the ISP login program on your computer to access the Internet. When you start an Internet application, your router automatically logs you in.

Installation and basic setup takes about 15 minutes to complete.

### To automatically set up your router:

1. Power on your router.
2. Make sure that your WiFi-enabled computer or mobile device is connected to the router with an Ethernet cable (wired) or wirelessly with the preset WiFi security settings listed on the label.

**Note:** If you want to change the router's WiFi settings, use a wired connection to avoid being disconnected when the new WiFi settings take effect.

3. Launch a web browser.

The page that displays depends on whether you accessed the router before:

- The first time that you set up the Internet connection for your router, the browser goes to **orbilogin.com**, and the Orbi login page displays.
- If you already set up the Internet connection, enter **orbilogin.com** in the address field for your browser to start the installation process.

4. Follow the onscreen instructions.

The router connects to the Internet.

5. If the browser does not display the web page, do the following:

- Make sure that the computer is connected to one of the four LAN Ethernet ports or over WiFi to the router.
- Make sure that the router is receiving power, and that its Power LED is lit.
- Close and reopen the browser or clear the browser cache.
- Browse to **orbilogin.com**.
- If the computer is set to a static or fixed IP address (this setting is uncommon), change it to obtain an IP address automatically from the router.

6. If the router does not connect to the Internet, do the following:

- a. Review your settings.
- b. Make sure that you selected the correct options and typed everything correctly.
- c. Contact your ISP to verify that you are using the correct configuration information.
- d. Read [Troubleshooting](#) on page 116.

If problems persist, register your NETGEAR product and contact NETGEAR technical support.

## Log in to the Orbi router web interface

When you log in to the Orbi, the browser displays the router web interface. You can use the router web interface to change the router or satellite settings.

### To log in to your Orbi:

1. Launch a web browser from a computer or mobile device that is connected to your Orbi network.
2. Enter **orbilogin.com**.  
A login window opens.
3. Enter the router admin user name and password.  
The user name is **admin**. The password is the one that you specified the first time that you logged in. The user name and password are case-sensitive.  
The BASIC Home page displays.

## Change the language

By default, the language is set as Auto.

### To change the language:

1. Launch a web browser from a computer or mobile device that is connected to your Orbi network.
2. Enter **orbilogin.com**.  
A login window opens.
3. Enter the router admin user name and password.  
The user name is **admin**. The password is the one that you specified the first time that you logged in. The user name and password are case-sensitive.  
The BASIC Home page displays.
4. In the upper right corner, select a language from the menu.
5. When prompted, click the **OK** button to confirm this change.  
The page refreshes with the language that you selected.

# 3

## Specify Your Internet Settings

---

Usually, the quickest way to set up the router to use your Internet connection is to allow Orbi to detect the Internet connection when you first access the router with a web browser. You can also customize or specify your Internet settings.

This chapter contains the following sections:

- [Use the Setup Wizard](#)
- [Manually set up the Internet connection](#)
- [Requirements for entering IPv6 addresses](#)
- [Change the MTU size](#)

# Use the Setup Wizard

You can use the Setup Wizard to detect your Internet settings and automatically set up your router.

## To use the Setup Wizard:

1. Launch a web browser from a computer or mobile device that is connected to your Orbi network.
2. Enter **orbilogin.com**.  
A login window opens.
3. Enter the admin user name and password.  
The user name is **admin**. The password is the one that you specified the first time that you logged in. The user name and password are case-sensitive.  
The BASIC Home page displays.
4. Select **ADVANCED > Setup Wizard**.  
The Setup Wizard page displays.
5. Select the **Yes** radio button.  
If you select **No**, you are taken to the Internet Setup page (see [Manually set up the Internet connection](#) on page 22).
6. Click the **Next** button.  
The Setup Wizard searches your Internet connection for servers and protocols to determine your ISP configuration and checks your operation mode.

# Manually set up the Internet connection

You can view or change the router's Internet connection settings.

## Specify an Internet connection without a login

### To specify the Internet connection settings:

1. Launch a web browser from a computer or mobile device that is connected to your Orbi network.
2. Enter **orbilogin.com**.  
A login window opens.

3. Enter the admin user name and password.  
The user name is **admin**. The password is the one that you specified the first time that you logged in. The user name and password are case-sensitive.  
The BASIC Home page displays.
4. Select **Internet**.  
The Internet Setup page.
5. Leave the Does your Internet connection require a login **No** radio button selected.
6. If your Internet connection requires an account name or host name, type it in the **Account Name (If Required)** field.
7. If your Internet connection requires a domain name, type it in the **Domain Name (If Required)** field.  
For the other sections in this page, the default settings usually work, but you can change them.
8. Select an Internet IP Address radio button:
  - **Get Dynamically from ISP**. Your ISP uses DHCP to assign your IP address. Your ISP automatically assigns these addresses.
  - **Use Static IP Address**. Enter the IP address, IP subnet mask, and the gateway IP address that your ISP assigned. The gateway is the ISP router to which your router connects.
9. Select a Domain Name Server (DNS) Address radio button:
  - **Get Automatically from ISP**. Your ISP uses DHCP to assign your DNS servers. Your ISP automatically assigns this address.
  - **Use These DNS Servers**. If you know that your ISP requires specific servers, select this option. Enter the IP address of your ISP's primary DNS server. If a secondary DNS server address is available, enter it also.
10. Select a Router MAC Address radio button:
  - **Use Default Address**. Use the default MAC address.
  - **Use Computer MAC Address**. The router captures and uses the MAC address of the computer that you are now using. You must use the one computer that the ISP allows.
  - **Use This MAC Address**. Enter the MAC address that you want to use.
11. Click the **Apply** button.  
Your settings are saved.

12. Click the **Test** button to test your Internet connection.

## Specify an Internet connection that uses a login

### To view or change the basic Internet setup:

1. Launch a web browser from a computer or mobile device that is connected to your Orbi network.
2. Enter **orbilogin.com**.  
A login window opens.
3. Enter the admin user name and password.  
The user name is **admin**. The password is the one that you specified the first time that you logged in. The user name and password are case-sensitive.  
The BASIC Home page displays.
4. Select **Internet**.  
The Internet Setup page displays.
5. Select the Does your Internet connection require a login **Yes** radio button.  
The page adjusts.
6. From the **Internet Service Provider** menu, select the encapsulation method:  
The selections are **PPPoE**, **PPTP**, or **L2TP**.
7. In the **Login** field, enter the login name your ISP gave you.  
This login name is often an email address.
8. In the **Password** field, type the password that you use to log in to your Internet service.
9. If your ISP requires a service name, type it in the **Service Name (if Required)** field.
10. From the **Connection Mode** menu, select **Always On**, **Dial on Demand**, or **Manually Connect**.
11. To change the number of minutes until the Internet login time out, in the **Idle Timeout (In minutes)** field, type the number of minutes.  
This is how long the router keeps the Internet connection active when no one on the network is using the Internet connection. A value of 0 (zero) means never log out.



12. Select an Internet IP Address radio button:

- **Get Dynamically from ISP.** Your ISP uses DHCP to assign your IP address. Your ISP automatically assigns these addresses.
- **Use Static IP Address.** Enter the IP address, IP subnet mask, and gateway IP address that your ISP assigned. The gateway is the ISP router to which your router connects.

13. Select a Domain Name Server (DNS) radio button:

- **Get Automatically from ISP.** Your ISP uses DHCP to assign your DNS servers. Your ISP automatically assigns this address.
- **Use These DNS Servers.** If you know that your ISP requires specific servers, select this option. Enter the IP address of your ISP's primary DNS server. If a secondary DNS server address is available, enter it also.

14. Select a Router MAC Address radio button:

- **Use Default Address.** Use the default MAC address.
- **Use Computer MAC Address.** The router captures and uses the MAC address of the computer that you are now using. You must use the one computer that the ISP allows.
- **Use This MAC Address.** Enter the MAC address that you want to use.

15. Click the **Apply** button.

Your settings are saved.

16. Click the **Test** button to test your Internet connection.

## Requirements for entering IPv6 addresses

IPv6 addresses are denoted by eight groups of hexadecimal quartets that are separated by colons. You can reduce any four-digit group of zeros within an IPv6 address to a single zero or omit it. The following errors invalidate an IPv6 address:

- More than eight groups of hexadecimal quartets
- More than four hexadecimal characters in a quartet
- More than two colons in a row

## Specify IPv6 Internet connections

You can set up an IPv6 Internet connection if the router does not detect it automatically.

### To set up an IPv6 Internet connection:

1. Launch a web browser from a computer or mobile device that is connected to your Orbi network.
2. Enter **orbilogin.com**.  
A login window opens.
3. Enter the admin user name and password.  
The user name is **admin**. The password is the one that you specified the first time that you logged in. The user name and password are case-sensitive.  
The BASIC Home page displays.
4. Select **ADVANCED > Advanced Setup > IPv6**.  
The IPv6 page displays.
5. From the **Internet Connection Type** menu, select the IPv6 connection type:
  - If you are not sure, select **Auto Detect** so that the router detects the IPv6 type that is in use.
  - If your Internet connection does not use PPPoE, DHCP, or fixed, but is IPv6, select **Auto Config**.  
Your Internet service provider (ISP) can provide this information.  
For more information about IPv6 Internet connection, see the following sections:
    - [Use auto detection for an IPv6 Internet connection](#) on page 27
    - [Use auto configuration for an IPv6 Internet connection](#) on page 28
    - [Set up an IPv6 6rd tunnel Internet connection](#) on page 31
    - [Set up an IPv6 6to4 tunnel Internet connection](#) on page 30
    - [Set up an IPv6 pass-through Internet connection](#) on page 33
    - [Set up an IPv6 fixed Internet connection](#) on page 34
    - [Set up an IPv6 DHCP Internet connection](#) on page 35
    - [Set up an IPv6 PPPoE Internet connection](#) on page 37
6. Click the **Apply** button.  
Your settings are saved.

## Use auto detection for an IPv6 Internet connection

### To set up an IPv6 Internet connection through auto detection:

1. Launch a web browser from a computer or mobile device that is connected to your Orbi network.
2. Enter **orbilogin.com**.  
A login window opens.
3. Enter the admin user name and password.  
The user name is **admin**. The password is the one that you specified the first time that you logged in. The user name and password are case-sensitive.  
The BASIC Home page displays.

4. Select **ADVANCED > Advanced Setup > IPv6**.  
The IPv6 page displays.

5. From the **Internet Connection Type** menu, select **Auto Detect**.  
The page adjusts.

The router automatically detects the information in the following fields:

- **Connection Type**. This field indicates the connection type that is detected.
- **Router's IPv6 Address on WAN**. This field shows the IPv6 address that is acquired for the router's WAN (or Internet) interface. The number after the slash (/) is the length of the prefix, which is also indicated by the underline (\_\_) under the IPv6 address. If no address is acquired, the field displays Not Available.
- **Router's IPv6 Address on LAN**. This field shows the IPv6 address that is acquired for the router's LAN interface. The number after the slash (/) is the length of the prefix, which is also indicated by the underline (\_\_) under the IPv6 address. If no address is acquired, the field displays Not Available.

6. Select an **IP Address Assignment** radio button:

- **Use DHCP Server**. This method passes more information to LAN devices, but some IPv6 systems might not support the DHCv6 client function.
- **Auto Config**. This is the default setting.

This setting specifies how the router assigns IPv6 addresses to the devices on your home network (the LAN).

7. (Optional) Select the **Use This Interface ID** check box and specify the interface ID to be used for the IPv6 address of the router's LAN interface.

If you do not specify an ID here, the router generates one automatically from its MAC address.

8. Select an **IPv6 Filtering** radio button:
  - **Secured**. In secured mode, which is the default mode, the router inspects both TCP and UDP packets.
  - **Open**. In open mode, the router inspects UDP packets only.
9. Click the **Apply** button.  
Your settings are saved.

## Use auto configuration for an IPv6 Internet connection

### To set up an IPv6 Internet connection through auto configuration:

1. Launch a web browser from a computer or mobile device that is connected to your Orbi network.
2. Enter **orbilogin.com**.  
A login window opens.
3. Enter the admin user name and password.  
The user name is **admin**. The password is the one that you specified the first time that you logged in. The user name and password are case-sensitive.  
The BASIC Home page displays.
4. Select **ADVANCED > Advanced Setup > IPv6**.  
The IPv6 page displays.
5. From the **Internet Connection Type** menu, select **Auto Config**.  
The page adjusts.  
The router automatically detects the information in the following fields:
  - **Router's IPv6 Address on WAN**. This field shows the IPv6 address that is acquired for the router's WAN (or Internet) interface. The number after the slash (/) is the length of the prefix, which is also indicated by the underline ( ) under the IPv6 address. If no address is acquired, the field displays Not Available.
  - **Router's IPv6 Address on LAN**. This field shows the IPv6 address that is acquired for the router's LAN interface. The number after the slash (/) is the length of the prefix, which is also indicated by the underline ( ) under the IPv6 address. If no address is acquired, the field displays Not Available.

6. (Optional) In the **DHCP User Class (If Required)** field, enter a host name.  
Most people can leave this field blank, but if your ISP gave you a specific host name, enter it here.
7. (Optional) In the **DHCP Domain Name (If Required)** field, enter a domain name.  
You can type the domain name of your IPv6 ISP. Do not enter the domain name for the IPv4 ISP here. For example, if your ISP's mail server is mail.xxx.yyy.zzz, type xxx.yyy.zzz as the domain name. If your ISP provided a domain name, type it in this field. For example, Earthlink Cable might require a host name of home, and Comcast sometimes supplies a domain name.
8. Select an **IPv6 Domain Name Server (DNS) Address** radio button:
  - **Get Automatically from ISP.** Your ISP uses DHCP to assign your DNS servers. Your ISP automatically assigns this address.
  - **Use These DNS Servers.** If you know that your ISP requires specific servers, select this option. Enter the IP address of your ISP's primary DNS server. If a secondary DNS server address is available, enter it also.
9. Select an **IP Address Assignment** radio button:
  - **Use DHCP Server.** This method passes more information to LAN devices, but some IPv6 systems might not support the DHCv6 client function.
  - **Auto Config.** This is the default setting.
10. (Optional) Select the **Use This Interface ID** check box and specify the interface ID that you want to be used for the IPv6 address of the router's LAN interface.  
If you do not specify an ID here, the router generates one automatically from its MAC address.
11. Select an **IPv6 Filtering** radio button:
  - **Secured.** In secured mode, which is the default mode, the router inspects both TCP and UDP packets.
  - **Open.** In open mode, the router inspects UDP packets only.
12. Click the **Apply** button.  
Your settings are saved.

## Set up an IPv6 6to4 tunnel Internet connection

The remote relay router is the router to which your router creates a 6to4 tunnel. Make sure that the IPv4 Internet connection is working before you apply the 6to4 tunnel settings for the IPv6 connection.

### To set up an IPv6 Internet connection by using a 6to4 tunnel:

1. Launch a web browser from a computer or mobile device that is connected to your Orbi network.
2. Enter **orbilogin.com**.  
A login window opens.
3. Enter the admin user name and password.  
The user name is **admin**. The password is the one that you specified the first time that you logged in. The user name and password are case-sensitive.  
The BASIC Home page displays.

4. Select **ADVANCED > Advanced Setup > IPv6**.

The IPv6 page displays.

5. From the **Internet Connection Type** menu, select **6to4 Tunnel**.

The page adjusts.

The router automatically detects the information in the Router's IPv6 Address on LAN field. This field shows the IPv6 address that is acquired for the router's LAN interface. The number after the slash (/) is the length of the prefix, which is also indicated by the underline ( \_ ) under the IPv6 address. If no address is acquired, the field displays Not Available.

6. Select a **Remote 6to4 Relay Router** radio button:

- **Auto**. Your router uses any remote relay router that is available on the Internet. This is the default setting.
- **Static IP Address**. Enter the static IPv4 address of the remote relay router. Your IPv6 ISP usually provides this address.

7. Select an **IPv6 Domain Name Server (DNS Address)** radio button:

- **Get Automatically from ISP**. Your ISP uses DHCP to assign your DNS servers. Your ISP automatically assigns this address.
- **Use These DNS Servers**. If you know that your ISP requires specific servers, select this option. Enter the IP address of your ISP's primary DNS server. If a secondary DNS server address is available, enter it also.

8. Select an **IP Address Assignment** radio button:

- **Use DHCP Server.** This method passes more information to LAN devices, but some IPv6 systems might not support the DHCv6 client function.
- **Auto Config.** This is the default setting.

This setting specifies how the router assigns IPv6 addresses to the devices on your home network.

9. (Optional) Select the **Use This Interface ID** check box and specify the interface ID that you want to be used for the IPv6 address of the router's LAN interface.

If you do not specify an ID here, the router generates one automatically from its MAC address.

10. Select an **IPv6 Filtering** radio button:

- **Secured.** In secured mode, which is the default mode, the router inspects both TCP and UDP packets.
- **Open.** In open mode, the router inspects UDP packets only.

11. Click the **Apply** button.

Your settings are saved.

## Set up an IPv6 6rd tunnel Internet connection

The 6rd protocol makes it possible to deploy IPv6 to sites using a service provider's IPv4 network. 6rd uses the service provider's own IPv6 address prefix. This limits the operational domain of 6rd to the service provider's network and is under direct control of the service provider. The IPv6 service provided is equivalent to native IPv6. The 6rd mechanism relies on an algorithmic mapping between the IPv6 and IPv4 addresses that are assigned for use within the service provider's network. This mapping allows for automatic determination of IPv4 tunnel endpoints from IPv6 prefixes, allowing stateless operation of 6rd.

With a 6rd Tunnel configuration, the router follows the RFC5969 standard, supporting two ways to establish a 6rd tunnel IPv6 WAN connection:

- **Auto Detect Mode.** In IPv6 Auto Detect mode, when the router receives option 212 from the DHCPv4 option, auto detect selects the IPv6 as 6rd Tunnel setting. The router uses the 6rd option information to establish the 6rd connection.
- **Manual Mode.** Select 6rd. If the router receives option 212, the fields are automatically completed. Otherwise, you must enter the 6rd settings.

### To set up an IPv6 6rd Tunnel Internet connection:

1. Launch a web browser from a computer or mobile device that is connected to your Orbi network.
2. Enter **orbilogin.com**.  
A login window opens.
3. Enter the admin user name and password.  
The user name is **admin**. The password is the one that you specified the first time that you logged in. The user name and password are case-sensitive.  
The BASIC Home page displays.
4. Select **ADVANCED > Advanced Setup > IPv6**.  
The IPv6 page displays.
5. In the **Internet Connection Type** menu, select **6rd**.  
The page adjusts.  
The router automatically detects the information in the following sections:
  - **6rd (IPv6 Rapid Development) Configuration.** The router detects the service provider's IPv4 network and attempts to establish an IPv6 6rd Tunnel connection. If the IPv4 network returns 6rd parameters to the router, the page adjusts to display the correct settings in this section.
  - **Router's IPv6 Address on LAN.** This field shows the IPv6 address that is acquired for the router's LAN interface. The number after the slash (/) is the length of the prefix, which is also indicated by the underline ( ) under the IPv6 address. If no address is acquired, the field displays Not Available.
6. Select an **IPv6 Domain Name Server (DNS) Address** radio button:
  - **Get Automatically from ISP.** Your ISP uses DHCP to assign your DNS servers. Your ISP automatically assigns this address.
  - **Use These DNS Servers.** If you know that your ISP requires specific servers, select this option. Enter the IP address of your ISP's primary DNS server. If a secondary DNS server address is available, enter it also.
7. Select an **IP Address Assignment** radio button:
  - **Use DHCP Server.** This method passes more information to LAN devices, but some IPv6 systems might not support the DHCv6 client function.
  - **Auto Config.** This is the default setting.



This setting specifies how the router assigns IPv6 addresses to the devices on your home network.

8. (Optional) Select the **Use This Interface ID** check box and specify the interface ID that you want to be used for the IPv6 address of the router's LAN interface.  
If you do not specify an ID here, the router generates one automatically from its MAC address.
9. Select an **IPv6 Filtering** radio button:
  - **Secured**. In secured mode, which is the default mode, the router inspects both TCP and UDP packets.
  - **Open**. In open mode, the router inspects UDP packets only.
10. Click the **Apply** button.  
Your settings are saved.

## Set up an IPv6 pass-through Internet connection

In pass-through mode, the router works as a Layer 2 Ethernet switch with two ports (LAN and WAN Ethernet ports) for IPv6 packets. The router does not process any IPv6 header packets.

### To set up a pass-through IPv6 Internet connection:

1. Launch a web browser from a computer or mobile device that is connected to your Orbi network.
2. Enter **orbilogin.com**.  
A login window opens.
3. Enter the admin user name and password.  
The user name is **admin**. The password is the one that you specified the first time that you logged in. The user name and password are case-sensitive.  
The BASIC Home page displays.
4. Select **ADVANCED > Advanced Setup > IPv6**.  
The IPv6 page displays.
5. From the **Internet Connection Type** menu, select **Pass Through**.  
The page adjusts, but no additional fields display.
6. Click the **Apply** button.  
Your settings are saved.

## Set up an IPv6 fixed Internet connection

### To set up a fixed IPv6 Internet connection:

1. Launch a web browser from a computer or mobile device that is connected to your Orbi network.
2. Enter **orbilogin.com**.  
A login window opens.
3. Enter the admin user name and password.  
The user name is **admin**. The password is the one that you specified the first time that you logged in. The user name and password are case-sensitive.  
The BASIC Home page displays.
4. Select **ADVANCED > Advanced Setup > IPv6**.  
The IPv6 page displays.
5. From the **Internet Connection Type** menu, select **Fixed**.  
The page adjusts.
6. Configure the fixed IPv6 addresses for the WAN connection:
  - **IPv6 Address/Prefix Length**. The IPv6 address and prefix length of the router WAN interface.
  - **Default IPv6 Gateway**. The IPv6 address of the default IPv6 gateway for the router's WAN interface.
  - **Primary DNS Server**. The primary DNS server that resolves IPv6 domain name records for the router.
  - **Secondary DNS Server**. The secondary DNS server that resolves IPv6 domain name records for the router.

**Note:** If you do not specify the DNS servers, the router uses the DNS servers that are configured for the IPv4 Internet connection on the Internet Setup page. (See [Manually set up the Internet connection](#) on page 22.)
7. Select an **IP Address Assignment** radio button:
  - **Use DHCP Server**. This method passes more information to LAN devices, but some IPv6 systems might not support the DHCPv6 client function.
  - **Auto Config**. This is the default setting.

This setting specifies how the router assigns IPv6 addresses to the devices on your home network.

8. In the **IPv6 Address/Prefix Length** fields, specify the static IPv6 address and prefix length of the router's LAN interface.  
If you do not specify an ID here, the router generates one automatically from its MAC address.
9. Select an **IPv6 Filtering** radio button:
  - **Secured**. In secured mode, which is the default mode, the router inspects both TCP and UDP packets.
  - **Open**. In open mode, the router inspects UDP packets only.
10. Click the **Apply** button.  
Your settings are saved.

## Set up an IPv6 DHCP Internet connection

### To set up an IPv6 Internet connection with a DHCP server:

1. Launch a web browser from a computer or mobile device that is connected to your Orbi network.
2. Enter **orbilogin.com**.  
A login window opens.
3. Enter the admin user name and password.  
The user name is **admin**. The password is the one that you specified the first time that you logged in. The user name and password are case-sensitive.  
The BASIC Home page displays.
4. Select **ADVANCED > Advanced Setup > IPv6**.  
The IPv6 page displays.
5. From the **Internet Connection Type** menu, select **DHCP**.  
The page adjusts.  
The router automatically detects the information in the following fields:
  - **Router's IPv6 Address on WAN**. This field shows the IPv6 address that is acquired for the router's WAN (or Internet) interface. The number after the slash (/) is the

length of the prefix, which is also indicated by the underline (   ) under the IPv6 address. If no address is acquired, the field displays Not Available.

- **Router's IPv6 Address on LAN.** This field shows the IPv6 address that is acquired for the router's LAN interface. The number after the slash (/) is the length of the prefix, which is also indicated by the underline (   ) under the IPv6 address. If no address is acquired, the field displays Not Available.

6. Select an **IPv6 Domain Name Server (DNS) Address** radio button:

- **Get Automatically from ISP.** Your ISP uses DHCP to assign your DNS servers. Your ISP automatically assigns this address.
- **Use These DNS Servers.** If you know that your ISP requires specific servers, select this option. Enter the IP address of your ISP's primary DNS server. If a secondary DNS server address is available, enter it also.

7. (Optional) In the **User Class (If Required)** field, enter a host name.

Most people can leave this field blank, but if your ISP gave you a specific host name, enter it here.

8. (Optional) In the **Domain Name (If Required)** field, enter a domain name.

You can type the domain name of your IPv6 ISP. Do not enter the domain name for the IPv4 ISP here. For example, if your ISP's mail server is mail.xxx.yyy.zzz, type xxx.yyy.zzz as the domain name. If your ISP provided a domain name, type it in this field. For example, Earthlink Cable might require a host name of home, and Comcast sometimes supplies a domain name.

9. Select an **IP Address Assignment** radio button:

- **Use DHCP Server.** This method passes more information to LAN devices, but some IPv6 systems might not support the DHCv6 client function.
- **Auto Config.** This is the default setting.

This setting specifies how the router assigns IPv6 addresses to the devices on your home network (the LAN).

10. (Optional) Select the **Use This Interface ID** check box and specify the interface ID that you want to be used for the IPv6 address of the router's LAN interface.

If you do not specify an ID here, the router generates one automatically from its MAC address.

11. Select an **IPv6 Filtering** radio button:

- **Secured.** In secured mode, which is the default mode, the router inspects both TCP and UDP packets.
- **Open.** In open mode, the router inspects UDP packets only.

12. Click the **Apply** button.

Your settings are saved.

## Set up an IPv6 PPPoE Internet connection

### To set up a PPPoE IPv6 Internet connection:

1. Launch a web browser from a computer or mobile device that is connected to your Orbi network.

2. Enter **orbilogin.com**.

A login window opens.

3. Enter the admin user name and password.

The user name is **admin**. The password is the one that you specified the first time that you logged in. The user name and password are case-sensitive.

The BASIC Home page displays.

4. Select **ADVANCED > Advanced Setup > IPv6**.

The IPv6 page displays.

5. From the **Internet Connection Type** menu, select **PPPoE**.

The page adjusts.

The router automatically detects the information in the following fields:

- **Router's IPv6 Address on WAN.** This field shows the IPv6 address that is acquired for the router's WAN (or Internet) interface. The number after the slash (/) is the length of the prefix, which is also indicated by the underline ( ) under the IPv6 address. If no address is acquired, the field displays Not Available.
- **Router's IPv6 Address on LAN.** This field shows the IPv6 address that is acquired for the router's LAN interface. The number after the slash (/) is the length of the prefix, which is also indicated by the underline ( ) under the IPv6 address. If no address is acquired, the field displays Not Available.

6. In the **Login** field, enter the login information for the ISP connection.

This is usually the name that you use in your email address. For example, if your main mail account is JerAB@ISP.com, you would type JerAB in this field. Some ISPs (like

Earthlink and Deutsche Telekom) require that you use your full email address when you log in. If your ISP requires your full email address, type it in this field.

7. In the **Password** field, enter the password for the ISP connection.

8. In the **Service Name** field, enter a service name.

If your ISP did not provide a service name, leave this field blank.

**Note:** The default setting of the **Connection Mode** field is Always On to provide a steady IPv6 connection. The router never terminates the connection. If the connection is terminated, for example, when the modem is turned off, the router attempts to reestablish the connection immediately after the PPPoE connection becomes available again.

9. Select an **IPv6 Domain Name Server (DNS) Address** radio button:

- **Get Automatically from ISP.** Your ISP uses DHCP to assign your DNS servers. Your ISP automatically assigns this address.
- **Use These DNS Servers.** If you know that your ISP requires specific servers, select this option. Enter the IP address of your ISP's primary DNS server. If a secondary DNS server address is available, enter it also.

10. Select an **IP Address Assignment** radio button:

- **Use DHCP Server.** This method passes more information to LAN devices, but some IPv6 systems might not support the DHCv6 client function.
- **Auto Config.** This is the default setting.

This setting specifies how the router assigns IPv6 addresses to the devices on your home network (the LAN).

11. (Optional) Select the **Use This Interface ID** check box and specify the interface ID that you want to be used for the IPv6 address of the router's LAN interface.

If you do not specify an ID here, the router generates one automatically from its MAC address.

12. Select an **IPv6 Filtering** radio button:

- **Secured.** In secured mode, which is the default mode, the router inspects both TCP and UDP packets.
- **Open.** In open mode, the router inspects UDP packets only.

13. Click the **Apply** button.

Your settings are saved.

# Change the MTU size

The maximum transmission unit (MTU) is the largest data packet a network device transmits. When one network device communicates across the Internet with another, the data packets travel through many devices along the way. If a device in the data path uses a lower MTU setting than the other devices, the data packets must be split or “fragmented” to accommodate the device with the smallest MTU.

The best MTU setting for NETGEAR equipment is often the default value. In some situations, changing the value fixes one problem but causes another. Leave the MTU unchanged unless one of these situations occurs:

- You experience problems connecting to your ISP or other Internet service, and the technical support of either the ISP or NETGEAR recommends changing the MTU setting.  
For example, if a secure website does not open, or displays only part of a web page, you might need to change the MTU.
- You use VPN and experience severe performance problems.
- You used a program to optimize MTU for performance reasons, and now you are experiencing connectivity or performance problems.

**Note:** An incorrect MTU setting can cause Internet communication problems. For example, you might not be able to access certain websites, frames within websites, secure login pages, or FTP or POP servers.

## To change the MTU size:

1. Launch a web browser from a computer or mobile device that is connected to your Orbi network.
2. Enter **orbilogin.com**.  
A login window opens.
3. Enter the admin user name and password.  
The user name is **admin**. The password is the one that you specified the first time that you logged in. The user name and password are case-sensitive.  
The BASIC Home page displays.
4. Select **ADVANCED > Setup > WAN Setup**.  
The WAN Setup page displays.
5. In the **MTU Size** field, enter a value from 64 to 1500.

6. Click the Apply button.  
Your settings are saved.

If you suspect an MTU problem, a common solution is to change the MTU to 1400. If you are willing to experiment, you can gradually reduce the MTU from the maximum value of 1500 until the problem goes away. The following table describes common MTU sizes and applications.

Table 5. Common MTU sizes

MTU	Application
1500	The largest Ethernet packet size. This setting is typical for connections that do not use PPPoE or VPN, and is the default value for NETGEAR routers, adapters, and switches.
1492	Used in PPPoE environments.
1472	Maximum size to use for pinging. (Larger packets are fragmented.)
1468	Used in some DHCP environments.
1436	Used in PPTP environments or with VPN.
576	Typical value to connect to dial-up ISPs.



# 4

## Control Access to the Internet

---

The router comes with a built-in firewall that helps protect your home network from unwanted intrusions from the Internet.

This chapter includes the following sections:

- [Activate and manage NETGEAR Armor using the Orbi app](#)
- [Allow or block access to your network](#)
- [Use keywords to block Internet sites](#)
- [Delete keywords that are used to block Internet sites](#)
- [Avoid blocking on a trusted computer](#)
- [Block services from the Internet](#)
- [Manage network access control lists](#)
- [Schedule when to block Internet sites and services](#)
- [Set up security event email notifications](#)

# Activate and manage NETGEAR Armor using the Orbi app

NETGEAR Armor is an advanced multi-layer cyber security solution that protects not only your network but individual devices as well. NETGEAR Armor protects your devices from viruses, spyware, hackers, spam, and phishing.

For more information about NETGEAR Armor, visit [netgear.com/landings/armor/default.aspx](http://netgear.com/landings/armor/default.aspx).

Use the NETGEAR Orbi app to activate and manage NETGEAR Armor.

## To activate Armor using the Orbi app:

1. Launch the Orbi app.  
The dashboard displays.
2. Tap **Security**.  
The Armor page displays.
3. Follow the onscreen instructions to set up Armor.

# Allow or block access to your network

You can use access control to block access to your network.

## To set up access control:

1. Launch a web browser from a computer or mobile device that is connected to your Orbi network.
2. Enter **orbilogin.com**.  
A login window opens.
3. Enter the admin user name and password.  
The user name is **admin**. The password is the one that you specified the first time that you logged in. The user name and password are case-sensitive.  
The BASIC Home page displays.
4. Select **ADVANCED > Security > Access Control**.  
The Access Control page displays.
5. Select the **Turn on Access Control** check box.

You must select this check box before you can specify an access rule and use the Allow and Block buttons. When this check box is cleared, all devices are allowed to connect, even if a device is in the blocked list.

6. Select an access rule:

- **Allow all new devices to connect.** With this setting, if you buy a new device, it can access your network. You don't need to enter its MAC address on this page. We recommend that you leave this radio button selected.
- **Block all new devices from connecting.** With this setting, if you buy a new device, before it can access your network, you must enter its MAC address for an Ethernet connection and its MAC address for a WiFi connection in the allowed list.

The access rule does not affect previously blocked or allowed devices. It applies only to devices joining your network in the future after you apply these settings.

7. To allow the computer or device you're currently using to continue to access the network, select the check box next to your computer or device, and click the **Allow** button.

8. To view a list of allowed or blocked devices that are not connected, click one of the following links:

- **View list of allowed devices not currently connected to the network**
- **View list of blocked devices not currently connected to the network**

The list displays.

9. Click the **Apply** button.

Your settings are saved.

## Use keywords to block Internet sites

You can use keywords to block certain Internet sites from your network. You can use blocking all the time or based on a schedule.

### To block Internet sites:

1. Launch a web browser from a computer or mobile device that is connected to your Orbi network.
2. Enter **orbilogin.com**.  
A login window opens.
3. Enter the admin user name and password.

The user name is **admin**. The password is the one that you specified the first time that you logged in. The user name and password are case-sensitive.

The BASIC Home page displays.

4. Select **ADVANCED > Security > Block Sites**.

The Block Sites page displays.

5. Select a keyword blocking option:

- **Per Schedule.** Turn on keyword blocking according to a schedule that you set. (See [Schedule when to block Internet sites and services](#) on page 48.)
- **Always.** Turn on keyword blocking all the time, independent of the Schedule page.

6. In the **Type keyword or domain name here** field, enter a keyword or domain that you want to block.

For example:

- Specify XXX to block <http://www.badstuff.com/xxx.html>.
- Specify .com if you want to allow only sites with domain suffixes such as .edu or .gov.
- Enter a period (.) to block all Internet browsing access.

7. Click the **Add Keyword** button.

The keyword is added to the keyword list. The keyword list supports up to 32 entries.

8. Click the **Apply** button.

Keyword blocking takes effect.

## Delete keywords that are used to block Internet sites

### To delete keywords that are used to block Internet sites:

1. Launch a web browser from a computer or mobile device that is connected to your Orbi network.
2. Enter **orbilogin.com**.  
A login window opens.
3. Enter the admin user name and password.

The user name is **admin**. The password is the one that you specified the first time that you logged in. The user name and password are case-sensitive.

The BASIC Home page displays.

4. Select **ADVANCED > Security > Block Sites**.

The Block Sites page displays.

5. Do one of the following:

- To delete a single word, select it and click the **Delete Keyword** button. The keyword is removed from the list.
- To delete all keywords on the list, click the **Clear List** button.

All keywords are removed from the list.

6. Click the **Apply** button.

Your settings are saved.

## Avoid blocking on a trusted computer

You can exempt one trusted computer from blocking. The computer that you exempt must be assigned a fixed IP address. You can use the reserved IP address feature to specify the IP address. See [Manage reserved LAN IP addresses](#) on page 61.

### To specify a trusted computer:

1. Launch a web browser from a computer or mobile device that is connected to your Orbi network.
2. Enter **orbilogin.com**.  
A login window opens.
3. Enter the admin user name and password.  
The user name is **admin**. The password is the one that you specified the first time that you logged in. The user name and password are case-sensitive.  
The BASIC Home page displays.
4. Select **ADVANCED > Security > Block Sites**.  
The Block Sites page displays.
5. Scroll down and select the **Allow trusted IP address to visit blocked sites** check box.
6. In the **Trusted IP Address** field, enter the IP address of the trusted computer.

7. Click the **Apply** button.  
Your settings are saved.

## Block services from the Internet

You can block Internet services on your network based on the type of service. You can block the services all the time or based on a schedule.

### To block services:

1. Launch a web browser from a computer or mobile device that is connected to your Orbi network.
2. Enter **orbilogin.com**.  
A login window opens.
3. Enter the admin user name and password.  
The user name is **admin**. The password is the one that you specified the first time that you logged in. The user name and password are case-sensitive.  
The BASIC Home page displays.
4. Select **ADVANCED > Security > Block Services**.  
The Block Services page displays.
5. Specify when to block the services:
  - To block the services all the time, select the **Always** radio button.
  - To block the services based on a schedule, select the **Per Schedule** radio button.

For information about how to specify the schedule, see [Schedule when to block Internet sites and services](#) on page 48.

6. Click the **Add** button.  
The Block Services Setup page displays.
7. To add a service that is in the **Service Type** list, select the application or service.  
The settings for this service automatically display in the fields.

8. To add a service or application that is not the list, select **User Defined**.
  - a. If you know that the application uses either TCP or UDP, select the appropriate protocol.  
Otherwise, select **TCP/UDP (both)**.
  - b. Enter the starting port and ending port numbers.
    - If the service uses a single port number, enter that number in both fields.
    - To find out which port numbers the service or application uses, you can contact the publisher of the application, ask user groups or newsgroups, or search on the Internet.
9. To specify how to filter the services, select one of the following radio buttons:
  - **Only This IP Address**. Block services for a single computer.
  - **IP Address Range**. Block services for a range of computers with consecutive IP addresses on your network.
  - **All IP Addresses**. Block services for all computers on your network.
10. Click the **Add** button.  
Your settings are saved.

## Manage network access control lists

You can use access control to block or allow access to your network.

### To manage devices that are allowed or blocked:

1. Launch a web browser from a computer or mobile device that is connected to your Orbi network.
2. Enter **orbilogin.com**.  
A login window opens.
3. Enter the admin user name and password.  
The user name is **admin**. The password is the one that you specified the first time that you logged in. The user name and password are case-sensitive.  
The BASIC Home page displays.
4. Select **ADVANCED > Security > Access Control**.  
The Access Control page displays.

5. Select the **Turn on Access Control** check box.
6. Click the **View list of allowed devices not currently connected to the network** link.  
The list displays.
7. Select the check box for a device.
8. Use the **Add** button, **Edit** button, and **Remove from the** list button as needed.
9. Click the **Apply** button.  
Your settings are saved.

## Schedule when to block Internet sites and services

When you schedule blocking, the same schedule is used to block sites and to block services. For information about how to specify what you want the router to block, see [Use keywords to block Internet sites](#) on page 43 and [Block services from the Internet](#) on page 46.

### To schedule blocking:

1. Launch a web browser from a computer or mobile device that is connected to your Orbi network.
2. Enter **orbilogin.com**.  
A login window opens.
3. Enter the admin user name and password.  
The user name is **admin**. The password is the one that you specified the first time that you logged in. The user name and password are case-sensitive.  
The BASIC Home page displays.
4. Select **ADVANCED > Security > Schedule**.
5. Specify when to block keywords and services:
  - **Days to Block.** Select the check box for each day that you want to block the keywords or select the Every Day check box, which automatically selects the check boxes for all days.
  - **Time of Day to Block.** Select a start and end time in 24-hour format, or select All Day for 24-hour blocking.



6. Click the **Apply** button.  
Your settings are saved.

## Set up security event email notifications

The router can email you its logs of router activity. The log records router activity and security events such as attempts to access blocked sites or services.

### To set up email notifications:

1. Launch a web browser from a computer or mobile device that is connected to your Orbi network.
2. Enter **orbilogin.com**.  
A login window opens.
3. Enter the admin user name and password.  
The user name is **admin**. The password is the one that you specified the first time that you logged in. The user name and password are case-sensitive.  
The BASIC Home page displays.
4. Select **ADVANCED > Security > E-mail**.  
The E-mail page displays.
5. Select the **Turn Email Notification On** check box.
6. In the **Primary E-mail Address** field, enter the email address to which logs and alerts are sent.  
This email address is also used for the From address. If this field is blank, log and alert messages are not sent.
7. In the **Your Outgoing Mail Server** field, enter the name of your ISP outgoing (SMTP) mail server (such as mail.myISP.com).  
You might be able to find this information in the configuration window of your email program. If you leave this field blank, log and alert messages are not sent.
8. In the **Outgoing Mail Server Port Number** field, enter your mail server's port number.  
You might be able to find this information in the configuration window of your email program.

9. If your outgoing email server requires authentication, select the **My Mail Server requires authentication** check box and do the following:

- In the **User Name** field, type the user name for the outgoing email server.
- In the **Password** field, type the password for the outgoing email server.

10. To send alerts immediately, select the **Send Alerts Immediately** check box.  
Email alerts are sent immediately when someone attempts to visit a blocked site.

11. To send logs based on a schedule, specify these settings:

- From **Send logs according to this schedule** menu, select the schedule type.
- From the **Day** menu, select the day.
- From the **Time** menu, select the time, and select the **am** or **pm** radio button.

12. Click the **Apply** button.

Your settings are saved.

Logs are sent automatically. If the log fills before the specified time, it is sent. After the log is sent, it is cleared from the router memory. If the router cannot email the log and the log buffer fills, the router overwrites the log.

# 5

## Specify Network Settings

---

This chapter includes the following sections:

- [View or change WAN settings](#)
- [Manage Dynamic DNS](#)
- [Set up a default DMZ server](#)
- [Change the router's device name](#)
- [Change the LAN TCP/IP settings](#)
- [Use the router as a DHCP server](#)
- [Disable the DHCP server feature in the router](#)
- [Manage reserved LAN IP addresses](#)
- [Manage custom static routes](#)
- [Specify basic WiFi settings](#)
- [Change the WiFi password or security level](#)
- [Set up a guest WiFi network](#)
- [Change your region](#)
- [Use the router as a WiFi access point](#)
- [Set up router mode](#)
- [Generate a new backhaul password](#)
- [Set up a bridge for a port group or VLAN tag group](#)
- [Improve network connections with Universal Plug and Play](#)

# View or change WAN settings

You can view or configure wide area network (WAN) settings for the Internet port. You can set up a DMZ (demilitarized zone) server, change the maximum transmit unit (MTU) size, and enable the router to respond to a ping to its WAN (Internet) port.

## To view the WAN settings:

1. Launch a web browser from a computer or mobile device that is connected to your Orbi network.
2. Enter **orbilogin.com**.  
A login window opens.
3. Enter the admin user name and password.  
The user name is **admin**. The password is the one that you specified the first time that you logged in. The user name and password are case-sensitive.  
The BASIC Home page displays.
4. Select **ADVANCED > Setup > WAN Setup**  
The WAN Setup page displays.
5. View or change the following settings:
  - **Disable Port Scan and DoS Protection.** DoS protection protects your LAN against denial of service attacks such as Syn flood, Smurf Attack, Ping of Death, and many others. Select this check box only in special circumstances.
  - **Default DMZ Server.** This feature is sometimes helpful when you are playing online games or videoconferencing, but it makes the firewall security less effective. See [Set up a default DMZ server](#) on page 56.
  - **Respond to Ping on Internet Port.** This feature allows your router to be discovered. Use this feature only as a diagnostic tool or if you have a specific reason.
  - **Disable IGMP Proxying.** IGMP proxying allows a computer on the local area network (LAN) to receive the multicast traffic it is interested in from the Internet. If you do not need this feature, select this check box to disable it.
  - **MTU Size (in bytes).** The normal MTU (maximum transmit unit) value for most Ethernet networks is 1500 bytes, or 1492 bytes for PPPoE connections. Change the MTU only if you are sure that it is necessary for your ISP connection. See [Change the MTU size](#) on page 39.
  - **NAT Filtering.** Network Address Translation (NAT) determines how the router processes inbound traffic. Secured NAT protects computers on the LAN from attacks from the Internet, but might prevent some Internet games, point-to-point

applications, or multimedia applications from working. Open NAT provides a much less secured firewall, but allows almost all Internet applications to work.

- **Disable SIP ALG.** The application-level gateway (ALG) for the Session Initiation Protocol (SIP) is enabled by default for enhanced address and port translation. However, some types of VoIP and video traffic might not work well when the SIP ALG is enabled. For this reason, the router provides the option to disable the SIP ALG.

6. Click the **Apply** button.

Your settings are saved.

## Manage Dynamic DNS

Internet service providers (ISPs) assign numbers called IP addresses to identify each Internet account. Most ISPs use dynamically assigned IP addresses. This means that the IP address can change at any time. You can use the IP address to access your network remotely, but most people don't know what their IP addresses are or when this number changes.

To make it easier to connect, you can get a free account with a Dynamic DNS service that lets you use a domain name to access your home network. To use this account, you must set up the router to use Dynamic DNS. Then the router notifies the Dynamic DNS service provider whenever its IP address changes. When you access your Dynamic DNS account, the service finds the current IP address of your home network and automatically connects you.

If your ISP assigns a private WAN IP address (such as 192.168.x.x or 10.x.x.x), the Dynamic DNS service does not work because private addresses are not routed on the Internet.

## Set up a new Dynamic DNS account

### To set up Dynamic DNS and register for a free NETGEAR account:

1. Launch a web browser from a computer or mobile device that is connected to your Orbi network.
2. Enter **orbilogin.com**.  
A login window opens.
3. Enter the admin user name and password.  
The user name is **admin**. The password is the one that you specified the first time that you logged in. The user name and password are case-sensitive.  
The BASIC Home page displays.

4. Select **ADVANCED > Advanced Setup > Dynamic DNS**.  
The Dynamic DNS page displays.
5. Select the **Use a Dynamic DNS Service** check box.
6. In the **Service Provider** list, select **NETGEAR**.
7. Select the **No** radio button.
8. In the **Host Name** field, type the name that you want to use for your URL.  
The host name is sometimes called the domain name. Your free URL includes the host name that you specify, and ends with mynetgear.com. For example, specify *MyName.mynetgear.com*.
9. In the **Email** field, type the email address that you want to use for your account.
10. In the **Password (6-32 characters)** field, type the password for your account.
11. To agree to the terms of service and privacy policy, select the check box above the **REGISTER** button.
12. Click the **REGISTER** button.
13. Follow the onscreen instructions to register for your NETGEAR Dynamic DNS service.
14. To check that Dynamic DNS is enabled in the router, click the **Show Status** button.  
A message displays the Dynamic DNS status.

## Specify a DNS account that you already created

If you already own a Dynamic DNS account with NETGEAR, No-IP, or Dyn, you can set up the router to use your account.

### To set up Dynamic DNS if you already created an account:

1. Launch a web browser from a computer or mobile device that is connected to your Orbi network.
2. Enter **orbilogin.com**.  
A login window opens.
3. Enter the admin user name and password.  
The user name is **admin**. The password is the one that you specified the first time that you logged in. The user name and password are case-sensitive.  
The BASIC Home page displays.
4. Select **ADVANCED > Advanced Setup > Dynamic DNS**.  
The Dynamic DNS page displays.

5. Select the **Use a Dynamic DNS Service** check box.
6. In the **Service Provider** list, select your provider.
7. Select the **Yes** radio button.  
The page adjusts and displays to show the **Status**, **Cancel**, and **Apply** buttons.
8. In the **Host Name** field, type the host name (sometimes called the domain name) for your account.
9. For a No-IP account or Dyn account, in the **User Name** field, enter the user name for your account.
10. For a NETGEAR account at No-IP, in the **Email** field, type the email address for your account.
11. In the **Password (6-32 characters)** field, type the password for your DDNS account.
12. Click the **Apply** button.  
Your settings are saved.
13. To verify that your Dynamic DNS service is enabled in the router, click the **Show Status** button.  
A message displays the Dynamic DNS status.

## Change the Dynamic DNS settings

### To change your settings:

1. Launch a web browser from a computer or mobile device that is connected to your Orbi network.
2. Enter **orbilogin.com**.  
A login window opens.
3. Enter the admin user name and password.  
The user name is **admin**. The password is the one that you specified the first time that you logged in. The user name and password are case-sensitive.  
The BASIC Home page displays.
4. Select **ADVANCED > Advanced Setup > Dynamic DNS**.  
The Dynamic DNS page displays.
5. Change your DDNS account settings as necessary.
6. Click the **Apply** button.  
Your settings are saved.

## Set up a default DMZ server

The default DMZ server feature is helpful when you are using some online games and videoconferencing applications that are incompatible with Network Address Translation (NAT). The router is programmed to recognize some of these applications and to work correctly with them, but other applications might not function well. In some cases, one local computer can run the application correctly if the IP address for that computer is entered as the default DMZ server.

DMZ servers pose a security risk. A computer designated as the default DMZ server loses much of the protection of the firewall and is exposed to exploits from the Internet. If compromised, the DMZ server computer can be used to attack other computers on your network.

The router usually detects and discards incoming traffic from the Internet that is not a response to one of your local computers or a service that you configured in the Port Forwarding/Port Triggering page. Instead of discarding this traffic, you can specify that the router forwards the traffic to one computer on your network. This computer is called the default DMZ server.

### To set up a default DMZ server:

1. Launch a web browser from a computer or mobile device that is connected to your Orbi network.
2. Enter **orbilogin.com**.  
A login window opens.
3. Enter the admin user name and password.  
The user name is **admin**. The password is the one that you specified the first time that you logged in. The user name and password are case-sensitive.  
The BASIC Home page displays.
4. Select **ADVANCED > Setup > WAN Setup**.  
The WAN Setup page displays.
5. Select the Default DMZ Server check box.
6. Type the IP address.
7. Click the **Apply** button.  
Your settings are saved.



# Change the router's device name

The router's device name is its model number. This device name displays in a file manager when you browse your network.

## To change the router's device name:

1. Launch a web browser from a computer or mobile device that is connected to your Orbi network.
2. Enter **orbilogin.com**.  
A login window opens.
3. Enter the admin user name and password.  
The user name is **admin**. The password is the one that you specified the first time that you logged in. The user name and password are case-sensitive.  
The BASIC Home page displays.
4. Select **ADVANCED > Setup > Device Name**.  
The Device Name page displays.
5. In the **Device Name** field, type a new name.
6. Click the **Apply** button.  
Your settings are saved.

# Change the LAN TCP/IP settings

The router is preconfigured to use private IP addresses on the LAN side and to act as a DHCP server. The router's default LAN IP configuration is as follows:

- **LAN IP address.** 192.168.1.1
- **Subnet mask.** 255.255.255.0

These addresses are part of the designated private address range for use in private networks and are suitable for most applications. If your network requires a different IP addressing scheme, you can change these settings.

You might want to change these settings if you need a specific IP subnet that one or more devices on the network uses, or if you use competing subnets with the same IP scheme.

### To change the LAN TCP/IP settings:

1. Launch a web browser from a computer or mobile device that is connected to your Orbi network.
  2. Enter **orbilogin.com**.  
A login window opens.
  3. Enter the admin user name and password.  
The user name is **admin**. The password is the one that you specified the first time that you logged in. The user name and password are case-sensitive.  
The BASIC Home page displays.
  4. Select **ADVANCED > Setup > LAN Setup**.  
The LAN Setup page displays.
  5. In the **IP Address** field, type the IP address.
  6. In the **IP Subnet Mask**, type the subnet mask of the router.  
The IP address and subnet mask identifies which addresses are local to a specific device and which must be reached through a gateway or router.
  7. Change the RIP settings.  
Router Information Protocol (RIP) allows a router to exchange routing information with other routers.
    - a. Select the **RIP direction**:
      - **Both**. The router broadcasts its routing table periodically and incorporates information that it receives.
      - **Out Only**. The router broadcasts its routing table periodically.
      - **In Only**. The router incorporates the RIP information that it receives.
    - b. Select the **RIP version**:
      - **Disabled**. This is the default setting.
      - **RIP-1**. This format is universally supported. It is adequate for most networks, unless you are using an unusual network setup.
      - **RIP-2B**. This format carries more information. RIP-2B sends the routing data in RIP-2 format and uses subnet broadcasting.
      - **RIP-2M**. This format carries more information. RIP-2M sends the routing data in RIP-2 format and uses multicasting.
  8. Click the **Apply** button.
-

Your settings are saved.

If you changed the LAN IP address of the router, you are disconnected when this change takes effect.

9. To reconnect, close your browser, relaunch it, and log in to the router.

## Use the router as a DHCP server

By default, the router acts as a Dynamic Host Configuration Protocol (DHCP) server. The router assigns IP, DNS server, and default gateway addresses to all computers connected to the LAN. The assigned default gateway address is the LAN address of the router.

These addresses must be part of the same IP address subnet as the router's LAN IP address. Using the default addressing scheme, define a range between 192.168.1.2 and 192.168.1.254, although you can save part of the range for devices with fixed addresses.

### **To use the router as a DHCP server and specify the pool of IP addresses that the router assigns:**

1. Launch a web browser from a computer or mobile device that is connected to your Orbi network.
2. Enter **orbilogin.com**.  
A login window opens.
3. Enter the admin user name and password.  
The user name is **admin**. The password is the one that you specified the first time that you logged in. The user name and password are case-sensitive.  
The BASIC Home page displays.
4. Select **ADVANCED > Setup > LAN Setup**.  
The LAN Setup page displays.
5. If you previously disabled the DHCP server feature, select the **Use Router as DHCP Server** check box.
6. Specify the range of IP addresses that the router assigns:
  - a. In the **Starting IP Address** field, enter the lowest number in the range.  
This IP address must be in the same subnet as the router. The default starting IP address is 192.168.1.2.
  - b. In the **Ending IP Address** field, enter the number at the end of the range of IP addresses.

This IP address must be in the same subnet as the router. The default ending IP address is 192.168.1.254.

7. Click the **Apply** button.

Your settings are saved.

The router delivers the following parameters to any LAN device that requests DHCP:

- An IP address from the range that you defined
- Subnet mask
- Gateway IP address (the router's LAN IP address)
- DNS server IP address (the router's LAN IP address)

## Disable the DHCP server feature in the router

By default, the router acts as a DHCP server. The router assigns IP, DNS server, and default gateway addresses to all computers connected to the LAN. The assigned default gateway address is the LAN address of the router.

You can use another device on your network as the DHCP server, or specify the network settings of all your computers.

### To disable the DHCP server feature in the router:

1. Launch a web browser from a computer or mobile device that is connected to your Orbi network.
2. Enter **orbilogin.com**.  
A login window opens.
3. Enter the admin user name and password.  
The user name is **admin**. The password is the one that you specified the first time that you logged in. The user name and password are case-sensitive.  
The BASIC Home page displays.
4. Select **ADVANCED > Setup > LAN Setup**.  
The LAN Setup page displays.
5. Clear the **Use Router as DHCP Server** check box.
6. Click the **Apply** button.
7. (Optional) If this service is disabled and no other DHCP server is on your network, set your computer IP addresses manually so that they can access the router.

# Manage reserved LAN IP addresses

When you specify a reserved IP address for a computer on the LAN, that computer always receives the same IP address each time it accesses the router's DHCP server. Assign reserved IP addresses to computers or servers that require permanent IP settings.

## Reserve an IP address

### To reserve an IP address:

1. Launch a web browser from a computer or mobile device that is connected to your Orbi network.
2. Enter **orbilogin.com**.  
A login window opens.
3. Enter the admin user name and password.  
The user name is **admin**. The password is the one that you specified the first time that you logged in. The user name and password are case-sensitive.  
The BASIC Home page displays.
4. Select **ADVANCED > Setup > LAN Setup**.  
The LAN Setup page displays.
5. In the **Address Reservation** section of the page, click the **Add** button.
6. In the **IP Address** field, type the IP address to assign to the computer or server.  
The page adjusts.
7. Choose an IP address from the router's LAN subnet, such as 192.168.1.x.
8. Type the MAC address of the computer or server.

**Tip:** If the computer is already on your network, you can copy its MAC address from the Attached Devices page and paste it here.

9. Click the **Apply** button.

The reserved address is entered into the table.

The reserved address is not assigned until the next time the computer contacts the router's DHCP server. Reboot the computer, or access its IP configuration and force a DHCP release and renew.

## Edit a reserved IP address

### To edit a reserved address entry:

1. Launch a web browser from a computer or mobile device that is connected to your Orbi network.
2. Enter **orbilogin.com**.  
A login window opens.
3. Enter the admin user name and password.  
The user name is **admin**. The password is the one that you specified the first time that you logged in. The user name and password are case-sensitive.  
The BASIC Home page displays.
4. Select **ADVANCED > Setup > LAN Setup**.  
The LAN Setup page displays.
5. Select the radio button next to the reserved address.
6. Click the **Edit** button.  
The Address Reservation page displays.
7. Change the settings.
8. Click the **Apply** button.  
Your settings are saved.

## Delete a reserved IP address entry

### To delete a reserved address entry:

1. Launch a web browser from a computer or mobile device that is connected to your Orbi network.
2. Enter **orbilogin.com**.  
A login window opens.
3. Enter the admin user name and password.  
The user name is **admin**. The password is the one that you specified the first time that you logged in. The user name and password are case-sensitive.  
The BASIC Home page displays.
4. Select **ADVANCED > Setup > LAN Setup**.  
The LAN Setup page displays.

5. Select the radio button next to the reserved address.
6. Click the **Delete** button.  
The address is removed.

# Manage custom static routes

Typically, you do not need to add static routes unless you use multiple routers or multiple IP subnets on your network.

As an example of when a static route is needed, consider the following case:

- Your main Internet access is through a cable modem to an ISP.
- Your home network includes an ISDN router for connecting to the company where you are employed. This router's address on your LAN is 192.168.1.100.
- Your company's network address is 134.177.0.0.

When you set up your router, two implicit static routes were created. A default route was created with your ISP as the gateway, and a second static route was created to your local network for all 192.168.1.x addresses. With this configuration, if you try to access a device on the 134.177.0.0 network, your router forwards your request to the ISP. The ISP forwards your request to the company where you are employed, and the company firewall is likely to deny the request.

In this case you must define a static route, telling your router to access 134.177.0.0 through the ISDN router at 192.168.1.100. Here is an example:

- The **Destination IP Address** and **IP Subnet Mask** fields specify that this static route applies to all 134.177.x.x addresses.
- The **Gateway IP Address** field specifies that all traffic for these addresses will be forwarded to the ISDN router at 192.168.1.100.
- The **Private** check box is selected only as a precautionary security measure in case RIP is activated.

## Set up a static route

### To set up a static route:

1. Launch a web browser from a computer or mobile device that is connected to your Orbi network.
2. Enter **orbilogin.com**.  
A login window opens.

3. Enter the admin user name and password.  
The user name is **admin**. The password is the one that you specified the first time that you logged in. The user name and password are case-sensitive.  
The BASIC Home page displays.
4. Select **ADVANCED > Advanced Setup > Static Routes**.  
The Static Routes page displays.
5. Click the **Add** button.  
The page adjusts.
6. In the **Route Name** field, type a name for this static route (for identification purposes only.)
7. To limit access to the LAN only, select the **Private** check box.  
If Private is selected, the static route is not reported in RIP.
8. Select the **Active** check box to make this route take effect.
9. Type the IP address of the final destination.
10. Type the IP subnet mask for this destination.  
If the destination is a single host, type **255.255.255.255**.
11. Type the gateway IP address.  
This address must be on the same LAN segment as the router.
12. Type a number from 2 through 15 as the metric value.  
This value represents the number of routers between your network and the destination. Usually, a setting of 2 or 3 works.
13. Click the **Apply** button.  
The static route is added.

## Edit a static route

### To edit a static route:

1. Launch a web browser from a computer or mobile device that is connected to your Orbi network.
2. Enter **orbilogin.com**.  
A login window opens.
3. Enter the admin user name and password.



The user name is **admin**. The password is the one that you specified the first time that you logged in. The user name and password are case-sensitive.

The BASIC Home page displays.

4. Select **ADVANCED > Advanced Setup > Static Routes**.

The Static Routes page displays.

5. In the table, select the radio button for the route.

6. Click the **Edit** button.

The Static Routes page adjusts.

7. Edit the route information.

8. Click the **Apply** button.

Your settings are saved.

## Delete a static route

### To delete a static route:

1. Launch a web browser from a computer or mobile device that is connected to your Orbi network.

2. Enter **orbilogin.com**.

A login window opens.

3. Enter the admin user name and password.

The user name is **admin**. The password is the one that you specified the first time that you logged in. The user name and password are case-sensitive.

The BASIC Home page displays.

4. Select **ADVANCED > Advanced Setup > Static Routes**.

The Static Routes page displays.

5. In the table, select the radio button for the route.

6. Click the **Delete** button.

The route is removed from the table.

# Specify basic WiFi settings

The router and satellite come preset with the same WiFi network name (SSID) and the same WiFi security. You can find the SSID and password on the router label and on the satellite label. If you log in to the router and change the WiFi settings, the router automatically sends the new settings to the satellite.

If you change your WiFi settings, make a note of the new settings and store it in a safe place where you can easily find it.

If your computer or mobile device is using a WiFi connection when you change the network name (SSID) or other WiFi security settings, you are disconnected when you click the **Apply** button. To avoid this problem, use a computer with a wired connection to access the router.

## To specify basic WiFi settings:

1. Launch a web browser from a computer or mobile device that is connected to your Orbi network.
2. Enter **orbilogin.com**.  
A login window opens.
3. Enter the Orbi admin user name and password.  
The user name is **admin**. The password is the one that you specified the first time that you logged in. The user name and password are case-sensitive.  
The BASIC Home page displays.
4. Select **Wireless**.  
The Wireless Settings page displays.
5. To change the network name (SSID), type a new name in the **Name (SSID)** field.  
The name can be up to 32 characters long and it is case-sensitive. The default SSID is randomly generated and is on the router's label. If you change the name, make sure to write down the new name and keep it in a safe place.
6. To change the WiFi channel, select a number in the **Channel** list.  
In some regions, not all channels are available. Do not change the channel unless you experience interference (shown by lost connections or slow data transfers). If this happens, experiment with different channels to see which is the best.  
When you use multiple access points, it is better if adjacent access points use different channels to reduce interference. The recommended channel spacing between adjacent access points is four channels (for example, use Channels 1 and 5, or 6 and 10).

7. Click the **Apply** button.

Your settings are saved. The router sends the new settings to the satellite.

If you are using a WiFi connection and you changed the SSID, you are disconnected from the network.

8. Make sure that you can connect to the WiFi network with its new settings.

If you cannot connect using WiFi, check the following:

- Is your WiFi-enabled computer or mobile device connected to another WiFi network in your area? Some WiFi devices automatically connect to the first open network without WiFi security that they discover.
- Is your computer or WiFi device trying to connect to your network with its old settings (before you changed the settings)? If so, update the WiFi network selection in your computer or WiFi device to match the current settings for your network.

## Change the WiFi password or security level

The router and satellite come preset with the same WiFi network name (SSID) and the same WiFi security. You can find the SSID and password on the router label and on the satellite label. If you log in to the router and change the WiFi settings, the router automatically sends the new settings to the satellite. We recommend that you do not disable security.

### To change the WPA settings:

1. Launch a web browser from a computer or mobile device that is connected to your Orbi network.
2. Enter **orbilogin.com**.  
A login window opens.
3. Enter the Orbi admin user name and password.  
The user name is **admin**. The password is the one that you specified the first time that you logged in. The user name and password are case-sensitive.  
The BASIC Home page displays.
4. Select **Wireless**.  
The Wireless Settings page displays.

5. Under Security Options, select a WPA option:

- **WPA2-PSK [AES]**
- **WPA-PSK [TKIP] + WPA2-PSK [AES]**
- **WPA3-Personal [SAE]**

The WPA3 option uses the newest standard for the strongest security.

Some older computers and WiFi devices cannot use WPA3 or WPA2. If your network includes old computers and WiFi devices, select the **WPA-PSK [TKIP] + WPA2-PSK [AES]** radio button.

The **Password (Network Key) field** displays.

6. In the **Password (Network Key)** field, enter the network key (password) that you want to use.

For WPA and WPA2, it is a text string from 8 to 63 characters. For WPA3, it is a text string from 8 to 127 characters.

7. Write down the new password and keep it in a secure place for future reference.

8. Click the **Apply** button.

Your settings are saved.

## Set up a guest WiFi network

### To set up a guest WiFi network:

1. Launch a web browser from a computer or mobile device that is connected to your Orbi network.

2. Enter **orbilogin.com**.

A login window opens.

3. Enter the Orbi admin user name and password.

The user name is **admin**. The password is the one that you specified the first time that you logged in. The user name and password are case-sensitive.

The BASIC Home page displays.

4. Select **Guest Network**.

The Guest Network Settings page displays.

5. Select the **Enable Guest Network** check box.

6. To change the network name, type a new name in the **Guest Wireless Network Name (SSID)** field.

The name can be up to 32 characters long and it is case-sensitive. If you change the name, make sure to write down the new name and keep it in a safe place.

7. To enable security and encryption for the guest WiFi network, select a security option.
8. In the **Password (Network Key)** field, enter the network key (password) that you want to use.
9. Click the **Apply** button.  
Your settings are saved. The router sends the new settings to the satellite.

## Change your region

### To change your region:

1. Launch a web browser from a computer or mobile device that is connected to your Orbi network.
2. Enter **orbilogin.com**.  
A login window opens.
3. Enter the admin user name and password.  
The user name is **admin**. The password is the one that you specified the first time that you logged in. The user name and password are case-sensitive.  
The BASIC Home page displays.
4. Select **ADVANCED > Advanced Setup > Wireless Settings**.  
The Advanced Wireless Settings page displays.
5. In the **Region** list, select your region.  
In some locations, you cannot change this setting.
6. Click the **Apply** button.  
Your settings are saved.

## Use the router as a WiFi access point

You can set up the router to run as an access point (AP) on the same local network as another router or gateway.

For example, you can use the Orbi router as a WiFi access point that connects to a gateway or modem router that you already use for your Internet service. In this situation, you do not need to change the settings for the gateway or modem router.

### To set up the Orbi router as an AP after you set up your Internet connection:

1. Use an Ethernet cable to connect the Internet port of this router to a LAN port on your existing router or gateway.
  2. Launch a web browser from a computer or mobile device that is connected to your Orbi network.
  3. Enter **orbilogin.com**.  
A login window opens.
  4. Enter the admin user name and password.  
The user name is **admin**. The password is the one that you specified the first time that you logged in. The user name and password are case-sensitive.  
The BASIC Home page displays.
  5. Select **ADVANCED > Advanced Setup > Router/AP Mode**.  
The Router/AP Mode page displays.
  6. Select the **AP Mode** radio button.  
The page adjusts.
  7. Select the IP address setting:
    - **Get dynamically from existing router**. The other router on the network assigns an IP address to this router while this router is in AP mode.
    - **Enable fixed IP settings on this device (not recommended)**. Use this setting if you want to manually assign a specific IP address to this router while it is in AP mode. Using this option effectively requires advanced network experience.
- Note:** To avoid interference with other routers or gateways in your network, we recommend that you use different WiFi settings on each router. You can also turn off the WiFi radio on the other router or gateway and use the Orbi only for WiFi client access.
8. Click the **Apply** button.  
The IP address of the router changes, and you are disconnected.
  9. To reconnect, close and restart your browser and enter **orbilogin.com**.

## Set up router mode

If you set up your router as an access point, you can change it back to a router.

### To set up the Orbi router as a router:

1. Launch a web browser from a computer or mobile device that is connected to your Orbi network.
2. Enter **orbilogin.com**.  
A login window opens.
3. Enter the admin user name and password.  
The user name is **admin**. The password is the one that you specified the first time that you logged in. The user name and password are case-sensitive.  
The BASIC Home page displays.
4. Select **ADVANCED > Advanced Setup > Router/AP Mode**.  
The Router/AP Mode page displays.
5. Select the **Router Mode** radio button.  
The page adjusts.
6. Click the **Apply** button.  
Your settings are saved.

## Generate a new backhaul password

The backhaul password is a security key that is used in WiFi communication between the router and the satellite. You can generate a new backhaul password. After you generate a new backhaul password, you must use the **Sync** button to build a new backhaul connection so that the router and satellite can communicate with each other using WiFi.

### To generate a new backhaul password:

1. Launch a web browser from a computer or mobile device that is connected to your Orbi network.
2. Enter **orbilogin.com**.  
A login window opens.
3. Enter the admin user name and password.

The user name is **admin**. The password is the one that you specified the first time that you logged in. The user name and password are case-sensitive.

The BASIC Home page displays.

4. Select **ADVANCED > Advanced Setup > Wireless Settings**.

The Advanced Wireless Settings page displays.

5. In the **Backhaul Password** section, click the **GENERATE** button.

The router generates a new backhaul password.

## Set up a bridge for a port group or VLAN tag group

Some devices, such as an IPTV, cannot function behind the router's Network Address Translation (NAT) service or firewall. Based on what your Internet service provider (ISP) requires, for the device to connect to the ISP's network directly, you can enable the bridge between the device and the router's Internet port or add new VLAN tag groups to the bridge.

**Note:** If your ISP provides directions on how to set up a bridge for IPTV and Internet service, follow those directions.

**Note:** This feature is only supported if the router is in router mode.

### Set up a bridge for a port group

If the devices that are connected to the router's Ethernet LAN port include an IPTV device, your ISP might require you to set up a bridge for a port group for the router's Internet interface.

A bridge with a port group prevents packets that are sent between the IPTV device and the router's Internet port from being processed through the router's Network Address Translation (NAT) service.

#### **To configure a port group and enable the bridge:**

1. Launch a web browser from a computer or mobile device that is connected to your Orbi network.
2. Enter **orbilogin.com**.  
A login window opens.
3. Enter the Orbi admin user name and password.



The user name is **admin**. The password is the one that you specified the first time that you logged in. The user name and password are case-sensitive.

The BASIC Home page displays.

4. Select **ADVANCED > Advanced Setup > VLAN/Bridge Settings**.

The VLAN/Bridge Settings page displays.

5. Select the **Enable VLAN/Bridge Settings** check box.

The page expands.

6. Select the **By bridge group** radio button.

The section expands.

7. Select the **Wired Ports** check box that corresponds to the Ethernet port on the router to which the device is connected.

You must select at least one Wired Ports check box. You can select more than one check box.

8. Click the **Apply** button.

Your settings are saved.

## Set up a bridge for a VLAN tag group

If the devices that are connected to the router's Ethernet LAN ports include an IPTV device, your ISP might require you to set up a bridge for a VLAN tag group for the router's Internet interface.

If you are subscribed to IPTV service, the router might require VLAN tags to distinguish between the Internet traffic and the IPTV traffic. A bridge with a VLAN tag group prevents packets that are sent between the IPTV device and the router's Internet port from being processed through the router's Network Address Translation (NAT) service.

You can add VLAN tag groups to a bridge and assign VLAN IDs and priority values to each VLAN tag group.

### To add a VLAN tag group and enable the bridge:

1. Launch a web browser from a computer or mobile device that is connected to your Orbi network.
2. Enter **orbilogin.com**.  
A login window opens.
3. Enter the Orbi admin user name and password.

The user name is **admin**. The password is the one that you specified the first time that you logged in. The user name and password are case-sensitive.

The BASIC Home page displays.

4. Select **ADVANCED > Advanced Setup > VLAN/Bridge Settings**.  
The VLAN/Bridge Settings page displays.
5. Select the **Enable VLAN/Bridge Group** check box.  
The page expands.
6. Select the **By VLAN tag group** radio button.  
The section expands.
7. Click the **Add** button.  
The Add VLAN Rule page displays.
8. Specify the settings as described in the following table.

Field	Description
Name	Enter a name for the VLAN tag group. The name can be up to 10 characters.
VLAN ID	Enter a value from 1 to 4094.
Priority	Enter a value from 0 to 7.

Select the check box for a wired Ethernet port.

If your device is connected to an Ethernet port on the router, select the Ethernet port check box that corresponds to the Ethernet port on the router to which the device is connected.

You must select at least one Ethernet port. You can select more than one port.

9. Click the **Add** button.  
The VLAN tag group is added.
10. Click the **Apply** button.  
Your settings are saved.

## Improve network connections with Universal Plug and Play

Universal Plug and Play (UPnP) helps devices, such as Internet appliances and computers, access the network and connect to other devices as needed. UPnP devices can automatically discover the services from other registered UPnP devices on the network.

If you use applications such as multiplayer gaming, peer-to-peer connections, or real-time communications such as instant messaging or remote assistance, enable UPnP.

### To enable Universal Plug and Play:

1. Launch a web browser from a computer or mobile device that is connected to your Orbi network.
2. Enter **orbilogin.com**.  
A login window opens.
3. Enter the admin user name and password.  
The user name is **admin**. The password is the one that you specified the first time that you logged in. The user name and password are case-sensitive.  
The BASIC Home page displays.
4. Select **ADVANCED > Advanced Setup > UPnP**.  
The UPnP page displays.
5. Select the **Turn UPnP On** check box.  
By default, this check box is selected. UPnP for automatic device configuration can be enabled or disabled. If the **Turn UPnP On** check box is cleared, the router does not allow any device to automatically control router resources, such as port forwarding.
6. Type the advertisement period in minutes.  
The advertisement period specifies how often the router broadcasts its UPnP information. This value can range from 1 to 1440 minutes. The default period is 30 minutes. Shorter durations ensure that control points receive current device status at the expense of more network traffic. Longer durations can compromise the freshness of the device status but can significantly reduce network traffic.
7. Type the advertisement time to live in hops.  
The time to live for the advertisement is measured in hops (steps) for each UPnP packet sent. Hops are the steps a packet takes between routers. The number of hops can range from 1 to 255. The default value for the advertisement time to live is 4 hops, which should be fine for most home networks. If you notice that some devices are not being updated or reached correctly, it might be necessary to increase this value.
8. Click the **Apply** button.  
The UPnP Portmap Table displays the IP address of each UPnP device that is accessing the router and which ports (internal and external) that device opened. The UPnP Portmap Table also displays what type of port is open and whether that port is still active for each IP address.

9. To refresh the information in the UPnP Portmap Table, click the **Refresh** button.

# 6

## Manage Your Network

---

This chapter describes the router settings for administering and maintaining your router and home network.

The chapter includes the following sections:

- [Update the router and satellite firmware](#)
- [Change the admin password](#)
- [Enable admin password reset](#)
- [Reset the admin password](#)
- [View router status and usage information](#)
- [Display Internet port statistics](#)
- [Check the Internet connection status](#)
- [View the satellite status](#)
- [View and manage logs of router activity](#)
- [View devices connected to the network or edit device information](#)
- [View satellites connected to the network or edit satellite information](#)
- [Monitor Internet traffic](#)
- [Set your time zone, adjust for daylight saving time, or change the NTP server](#)
- [Manage the router configuration file](#)
- [Access your Orbi network from anywhere using the Orbi app](#)

# Update the router and satellite firmware

You can use the router web interface to check if new firmware is available and update your router and satellite, or you can manually update the firmware for your router and satellite.

## Check for firmware updates

### To check for new firmware and update your router and satellite:

1. Launch a web browser from a computer or mobile device that is connected to your Orbi network.
2. Enter **orbilogin.com**.  
A login window opens.
3. Enter the router admin user name and password.  
The user name is **admin**. The password is the one that you specified the first time that you logged in. The user name and password are case-sensitive.  
The BASIC Home page displays.
4. Select **ADVANCED > Administration > Firmware Update > Online Update**.  
The Firmware Update page displays.
5. Click the **Check** button.  
The router checks to see if new firmware is available for the router and satellite.
6. If new firmware is available, click the **Update All** button.  
The router locates and downloads the firmware for the router and satellite and begins the update.

**Note:** To avoid the risk of corrupting the firmware, do not interrupt the upgrade. For example, do not close the browser, click a link, or load a new page. Do not turn off the router or satellite.

When the upload is complete, your router and satellite restart. The update process typically takes about one minute. Read the new firmware release notes to find out if you must reconfigure the router after updating.

## Manually update firmware

If a satellite is connected to your router, you can log in to the router to manually upload the firmware on your satellite.

**WARNING:** We recommend that you always update the firmware on your satellite first, and then update your router. Also, do not update the firmware on your router and satellite at the same time, and do not update more than one Orbi device (router or satellite) at a time. If you need to update more than one Orbi device, wait for the first Orbi device to finish updating before updating your next Orbi device.

### **To manually update the firmware on your Orbi router and satellite, follow these high level steps:**

1. Visit [netgear.com/support](http://netgear.com/support) and download the firmware for both your Orbi router and satellite.
2. Update the firmware on your Orbi satellite.  
For more information, see [Manually update satellite firmware](#) on page 79.
3. Update the firmware on your Orbi router.  
For more information, see [Manually update router firmware](#) on page 80.

**Manually update satellite firmware** We recommend that you update your satellite's firmware *before* you update the router's firmware.

### **To manually update your satellite's firmware:**

1. Launch a web browser from a computer or mobile device that is connected to your Orbi network.
2. Enter **orbilogin.com**.  
A login window opens.
3. Enter the router admin user name and password.  
The user name is **admin**. The password is the one that you specified the first time that you logged in. The user name and password are case-sensitive.  
The BASIC Home page displays.
4. Select **ADVANCED > Administration > Firmware Update > Manual Update**.  
The Firmware Update page displays.
5. Select the check box next to your satellite's model name.  
If you have more than one satellite, only update one satellite at a time. You must wait for the first satellite to finish updating before updating the next satellite.
6. Click the **Update** button.

The Orbi satellite Firmware Update window opens.

7. If the browser asks you for the admin password, enter the same password that you entered for the router.
8. Click the **BROWSE** button.
9. Locate and select the satellite firmware file that you downloaded.  
The firmware file name ends in `.img` or `.chk`.
10. Click the **UPLOAD** button.  
It takes a few minutes to complete the process.
11. After Orbi satellite finishes updating, select **Status** and double-check the firmware version on the Status page.  
The firmware on your Orbi satellite is updated.

**Manually update router firmware** We recommend that you update your router's firmware *after* you update the satellite's firmware.

**WARNING:** Make sure that your satellite completes its firmware update before you update your router's firmware.

### To manually update your router's firmware:

1. Launch a web browser from a computer or mobile device that is connected to your Orbi network.
2. Enter **orbilogin.com**.  
A login window opens.
3. Enter the admin user name and password.  
The user name is **admin**. The password is the one that you specified the first time that you logged in. The user name and password are case-sensitive.  
The BASIC Home page displays.
4. Select **ADVANCED > Administration > Firmware Update > Manual Update**.  
The Firmware Update page displays.
5. Click the **Browse** button.
6. Locate and select the router firmware file you downloaded.  
The firmware file name ends in `.img`.
7. Click the **Upload** button.  
The firmware is updated.



## Change the admin password

This feature let you change the default password that is used to log in to the router with the user name admin. This password is not the one that you use to access the Orbi WiFi network.

**Note:** Be sure to change the password for the user name admin to a secure password. The ideal password contains no dictionary words from any language and contains uppercase and lowercase letters, numbers, and symbols. It can be up to 30 characters.

### To set the password for the user name admin:

1. Launch a web browser from a computer or mobile device that is connected to your Orbi network.
2. Enter **orbilogin.com**.  
A login window opens.
3. Enter the admin user name and password.  
The user name is **admin**. The password is the one that you specified the first time that you logged in. The user name and password are case-sensitive.  
The BASIC Home page displays.
4. Select **ADVANCED > Administration > Set Password**.  
The Set Password page displays.
5. Type the old password, and type the new password twice.
6. To be able to reset the password, select the **Enable Password Reset** check box.  
We recommend that you enable password reset.
7. Click the **Apply** button.  
Your settings are saved.

## Enable admin password reset

The router admin password is used to log in to your router web interface. We recommend that you enable the password reset feature so that you can reset the password if it is forgotten. This reset process is supported in Internet Explorer, Firefox, and Chrome browsers but not in the Safari browser.

**To enable password reset:**

1. Launch a web browser from a computer or WiFi device that is connected to the network.
2. Enter **http://www.orbilogin.com**.  
A login window opens.
3. Enter the admin user name and password.  
The user name is **admin**. The default password is **password**. The user name and password are case-sensitive.  
The BASIC Home page displays.
4. Select **ADVANCED > Administration > Set Password**.  
The Set Password page displays.
5. Select the **Enable Password Reset** check box.
6. Select two security questions and provide answers to them.
7. Click the **Apply** button.  
Your settings are saved.

## Reset the admin password

If you set up the password reset feature, you can recover your router admin password.

**To reset your admin password::**

1. Launch a web browser from a computer or mobile device that is connected to your Orbi network.
2. Enter **orbilogin.com**.  
A login window opens.
3. Click the **Cancel** button.  
If password reset is enabled, you are prompted to enter the router's serial number.
4. Enter the router's serial number in the field.  
You can find the router's serial number on the router label.
5. Click the **CONTINUE** button.
6. Enter your answers to the security questions.  
You defined these answers when you set up the password reset feature.

7. Click the **CONTINUE** button.  
You are requested to set a new admin password and set new security questions.
8. Enter your new admin password, set new security questions and answers, and click the **NEXT** button.  
Your settings are saved.
9. Click the **LOGIN AGAIN** button.  
A login window opens.
10. With your new admin password, log in to the router.

## View router status and usage information

### To view router status and usage information:

1. Launch a web browser from a computer or mobile device that is connected to your Orbi network.
2. Enter **orbilogin.com**.  
A login window opens.
3. Enter the admin user name and password.  
The user name is **admin**. The password is the one that you specified the first time that you logged in. The user name and password are case-sensitive.  
The BASIC Home page displays.
4. Click the **ADVANCED** tab.  
The ADVANCED Home page displays the router status.

## Display Internet port statistics

### To display Internet port statistics:

1. Launch a web browser from a computer or mobile device that is connected to your Orbi network.
2. Enter **orbilogin.com**.  
A login window opens.
3. Enter the admin user name and password.

The user name is **admin**. The password is the one that you specified the first time that you logged in. The user name and password are case-sensitive.

The BASIC Home page displays.

4. Click the **ADVANCED** tab.

5. In the Internet Port pane, click the **Show Statistics** button.

The Show Statistics window opens and displays following information:

- **System Up Time.** The time elapsed since the router was last restarted.
- **Port.** The statistics for the WAN (Internet) and LAN (Ethernet) ports. For each port, the page displays the following information:
  - **Status.** The link status of the port.
  - **TxPkts.** The number of packets transmitted on this port since reset or manual clear.
  - **RxPkts.** The number of packets received on this port since reset or manual clear.
  - **Collisions.** The number of collisions on this port since reset or manual clear.
  - **Tx B/s.** The current transmission (outbound) bandwidth used on the WAN and LAN ports.
  - **Rx B/s.** The current reception (inbound) bandwidth used on the WAN and LAN ports.
  - **Up Time.** The time elapsed since this port acquired the link.
  - **Poll Interval.** The interval at which the statistics are updated in this page.

6. To change the polling frequency, enter a time in seconds in the **Poll Interval** field and click the **Set Interval** button.

7. To stop the polling entirely, click the **Stop** button.

## Check the Internet connection status

### To check the Internet connection status:

1. Launch a web browser from a computer or mobile device that is connected to your Orbi network.
2. Enter **orbilogin.com**.  
A login window opens.

3. Enter the admin user name and password.  
The user name is **admin**. The password is the one that you specified the first time that you logged in. The user name and password are case-sensitive.

The BASIC Home page displays.

4. Click the **ADVANCED** tab.
5. In the Internet Port pane, click the **Connection Status** button.  
The Connection Status window opens and displays the following information
  - **IP Address.** The IP address that is assigned to the router.
  - **Subnet Mask.** The subnet mask that is assigned to the router.
  - **Default Gateway.** The IP address for the default gateway that the router communicates with.
  - **DHCP Server.** The IP address for the Dynamic Host Configuration Protocol server that provides the TCP/IP configuration for all the computers that are connected to the router.
  - **DNS Server.** The IP address of the Domain Name Service server that provides translation of network names to IP addresses.
  - **Lease Obtained.** The date and time when the lease was obtained.
  - **Lease Expires.** The date and time that the lease expires.
6. To release (stop) the Internet connection, click the **Release** button
7. To renew the Internet connection, click the **Renew** button.
8. To exit the page, click the **Close Window** button.

## View the satellite status

To view your satellite's status, it must be connected to your Orbi network.

### To view your satellite's status:

1. Launch a web browser from a computer or mobile device that is connected to your Orbi network.
2. Enter **orbilogin.com**.  
A login window opens.
3. Enter the router admin user name and password.  
The user name is **admin**. The password is the one that you specified the first time that you logged in. The user name and password are case-sensitive.

The BASIC Home page displays.

4. Select **Attached Devices**.

The Attached Devices page displays.

5. In the Connected Satellites section, find your satellite's IP address.

6. Enter your satellite's IP address in your web browser's address bar.

A login window opens.

7. Enter the same admin user name and password that you entered for the router.

The satellite's status displays.

## View and manage logs of router activity

The log is a detailed record of the websites you accessed or attempted to access and other router actions. Up to 256 entries are stored in the log.

### To view and manage logs:

1. Launch a web browser from a computer or mobile device that is connected to your Orbi network.

2. Enter **orbilogin.com**.

A login window opens.

3. Enter the admin user name and password.

The user name is **admin**. The password is the one that you specified the first time that you logged in. The user name and password are case-sensitive.

The BASIC Home page displays.

4. Select **ADVANCED > Administration > Logs**.

The Logs page displays the following information:

- **Date and time.** The date and time the log entry was recorded.
- **Source IP.** The IP address of the initiating device for this log entry.
- **Target address.** The name or IP address of the website or news group visited or to which access was attempted.
- **Action.** The action that occurred, such as whether Internet access was blocked or allowed.

5. To refresh the log page, click the **Refresh** button.

6. To clear the log entries, click the **Clear Log** button.
7. To email the log immediately, click the **Send Log** button.

# View devices connected to the network or edit device information

You can view the devices that are connected to your Orbi network. You can also edit the information that displays on the Attached Devices page in the router web interface.

## View devices connected to the network

You can view all computers or devices that are currently connected to your Orbi network.

### To view devices connected to your network:

1. Launch a web browser from a computer or mobile device that is connected to your Orbi network.
2. Enter **orbilogin.com**.  
A login window opens.
3. Enter the router admin user name and password.  
The user name is **admin**. The password is the one that you specified the first time that you logged in. The user name and password are case-sensitive.  
The BASIC Home page displays.
4. Select **Attached Devices**.  
The Attached Devices page displays the following information in the Connected Devices section:
  - **Device Name**. This section displays the device model, name, type, and IP address.
  - **IP Address**. This section displays the device IP address. The device's IP address can change because the router assigns an IP address to each device when it joins the network.
  - **MAC Address**. This section displays the device MAC address. The unique MAC address for each device does not change.
  - **Connection Type**. This section displays how the device is connected to the Orbi network through a wired Ethernet connection or WiFi connection.
  - **Connected Orbi**. This section displays the Orbi router or satellite that the device is connected to. The Orbi router's or satellite's MAC address also displays.

5. To update this page, click the **Refresh** button.

### Edit device information on the Attached Devices page

You can change the connected device model and name that display on the Attached Devices page.

#### To view devices connected to your network:

1. Launch a web browser from a computer or mobile device that is connected to your Orbi network.
2. Enter **orbilogin.com**.  
A login window opens.
3. Enter the router admin user name and password.  
The user name is **admin**. The password is the one that you specified the first time that you logged in. The user name and password are case-sensitive.  
The BASIC Home page displays.
4. Select **Attached Devices**.  
The Attached Devices page displays.
5. Select a connected device that displays on the page.  
The Edit Device page displays.
6. To change the device model, enter a new model in the **Device Model** field.
7. To change the device name, enter a new name in the **Device Name** field.
8. To change the device type, select a device from the **Device Type** menu.
9. Click the **APPLY** button.  
Your settings are saved.

### View satellites connected to the network or edit satellite information

You can view the satellites that are connected to your Orbi network. You can also edit the information that displays on the Attached Devices page in the router web interface.

#### View satellites connected to the network

You can view the satellites that are connected to your Orbi network.

---



### To view satellites connected to your network:

1. Launch a web browser from a computer or mobile device that is connected to your Orbi network.
2. Enter **orbilogin.com**.  
A login window opens.
3. Enter the router admin user name and password.  
The user name is **admin**. The password is the one that you specified the first time that you logged in. The user name and password are case-sensitive.  
The BASIC Home page displays.
4. Select **Attached Devices**.  
The Attached Devices page displays the following information in the Connected Satellites section:
  - **Device Name**. This section displays the satellite model, name, and IP address.
  - **IP Address**. This section displays the satellite IP address. The satellite's IP address can change because the router assigns an IP address to each satellite when it joins the network.
  - **MAC Address**. This section displays the satellite MAC address. The unique MAC address for each satellite does not change.
  - **Connection Type**. This section displays how the satellite is connected to the Orbi network through a wired Ethernet connection or 2G or 5G WiFi connection.
  - **Connected Orbi**. This section displays the Orbi router or satellite that the satellite is connected to. The Orbi router's or satellite's MAC address also displays.
  - **Backhaul Status**. This section displays the backhaul connection status between the satellite and router or another satellite.
5. To update this page, click the **Refresh** button.

## Edit satellite information that displays on the Attached Devices page

You can change the satellite's model and name that display on the Attached Devices page.

### To edit the satellite's model or name that displays on the Attached Devices page:

1. Launch a web browser from a computer or mobile device that is connected to your Orbi network.
2. Enter **orbilogin.com**.

A login window opens.

3. Enter the router admin user name and password.  
The user name is **admin**. The password is the one that you specified the first time that you logged in. The user name and password are case-sensitive.  
The BASIC Home page displays.
4. Select **Attached Devices**.  
The Attached Devices page displays.
5. Select a connected device that displays on the page.  
The Edit Device page displays.
6. To change the device model, enter a new model in the **Device Model** field.
7. To change the device name, enter a new name in the **Device Name** field.
8. Click the **APPLY** button.  
Your settings are saved.

## Monitor Internet traffic

Traffic metering allows you to monitor the volume of Internet traffic that passes through the router Internet port. You can set limits for traffic volume.

### To monitor Internet traffic:

1. Launch a web browser from a computer or mobile device that is connected to your Orbi network.
2. Enter **orbilogin.com**.  
A login window opens.
3. Enter the admin user name and password.  
The user name is **admin**. The password is the one that you specified the first time that you logged in. The user name and password are case-sensitive.  
The BASIC Home page displays.
4. Select **ADVANCED > Advanced Setup > Traffic Meter**.  
The Traffic Meter page displays.
5. Select the **Enable Traffic Meter** check box.

6. To control the volume of Internet traffic, use either the traffic volume control feature or the connection time control feature:
  - Select the **Traffic volume control by** radio button and then select one of the following options:
    - **No Limit.** No restriction is applied when the traffic limit is reached.
    - **Download only.** The restriction is applied to incoming traffic only.
    - **Both Directions.** The restriction is applied to both incoming and outgoing traffic.
  - Select the **Connection time control** radio button and enter the allowed hours in the **Monthly limit** field.
7. If your ISP charges for extra data volume when you make a new connection, enter the extra data volume in MB in the **Round up data volume for each connection by** field.
8. In the Traffic Counter section, set the traffic counter to begin at a specific time and date.

To start the traffic counter immediately, click the **Restart Counter Now** button.
9. If you want the router to issue a warning message before the monthly limit of Mbytes or hours is reached, in the Traffic Control section, enter a numeric value.

By default, the value is 0 and no warning message is issued.
10. To stop the Internet connection when the limit is attained, select the **Disconnect and disable the Internet connection** check box.
11. Click the **Apply** button.

The Internet Traffic Statistics section helps you to monitor the data traffic.
12. To update the Internet Traffic Statistics section, click the **Refresh** button.
13. To display more information about the data traffic on your router and to change the poll interval, click the **Internet Traffic Status** button.

## Set your time zone, adjust for daylight saving time, or change the NTP server

When you set up the router, you are specifying the time zone. You can specify another time zone and adjust for daylight saving time. By default, the router gets its time from

a NETGEAR Network Time Protocol (NTP) server. However, you can specify another NTP server.

### To set your time zone, adjust for daylight saving time, or change the NTP server:

1. Launch a web browser from a computer or mobile device that is connected to your Orbi network.
2. Enter **orbilogin.com**.  
A login window opens.
3. Enter the admin user name and password.  
The user name is **admin**. The password is the one that you specified the first time that you logged in. The user name and password are case-sensitive.  
The BASIC Home page displays.
4. Select **ADVANCED > Administration > NTP Settings**.  
The NTP Settings page displays.  
The page shows the current day, date, and time.
5. To change the time zone, select another time zone from the menu.
6. If you live in a region that observes daylight saving time, select the **Automatically adjust for daylight savings time** check box.
7. To change the NTP server, select the **Set your preferred NTP** server radio button, and specify the name or URL for the NTP server in the **NTP server** field.
8. Click the **Apply** button.  
Your settings are saved.

## Manage the router configuration file

The configuration settings of the router are stored within the router in a configuration file. You can back up (save) this file to your computer, restore it, or reset it to the factory default settings.

### Back up settings

#### To back up the router's configuration settings:

1. Launch a web browser from a computer or mobile device that is connected to your Orbi network.
2. Enter **orbilogin.com**.  
A login window opens.

3. Enter the admin user name and password.  
The user name is **admin**. The password is the one that you specified the first time that you logged in. The user name and password are case-sensitive.  
The BASIC Home page displays.
4. Select **ADVANCED > Administration > Backup Settings**.  
The Backup Settings page displays.
5. Click the **BACK UP** button.
6. Specify a location on your network.  
A copy of the current settings is saved in the location you specified.

## Erase the current configuration settings

You can erase the current configuration and restore the factory default settings. You might want to do this if you move the router to a different network.

### To erase the configuration settings:

1. Launch a web browser from a computer or mobile device that is connected to your Orbi network.
2. Enter **orbilogin.com**.  
A login window opens.
3. Enter the admin user name and password.  
The user name is **admin**. The password is the one that you specified the first time that you logged in. The user name and password are case-sensitive.  
The BASIC Home page displays.
4. Select **ADVANCED > Administration > Backup Settings**.  
The Backup Settings page displays.
5. Click the **ERASE** button.  
The factory default settings are restored. The user name is admin, the password is password, and the LAN IP address is 192.168.1.1. DHCP is enabled.

## Restore configuration settings

### To restore configuration settings that you backed up:

1. Launch a web browser from a computer or mobile device that is connected to your Orbi network.
2. Enter **orbilogin.com**.  
A login window opens.
3. Enter the admin user name and password.  
The user name is **admin**. The password is the one that you specified the first time that you logged in. The user name and password are case-sensitive.  
The BASIC Home page displays.
4. Select **ADVANCED > Administration > Backup Settings**.  
The Backup Settings page displays.
5. Click the **BROWSE** button to find and select the **.cfg** file.
6. Click the **RESTORE** button.  
The file is uploaded to the router and the router reboots.

**WARNING:** Do not interrupt the reboot process.

## Access your Orbi network from anywhere using the Orbi app

The Anywhere Access feature on the Orbi app allows you to connect to your Orbi network when you're away from home and change its settings. Before you can use the Anywhere Access feature on the Orbi app, you must update your router's firmware and download the latest Orbi app for your mobile device.

To download the latest Orbi app for your mobile device, visit <https://www.netgear.com/home/apps-services/orbi-app>.

# 7

## Customize Internet Traffic Rules for Ports

---

You can use port forwarding and port triggering to set up rules for Internet traffic. You need networking knowledge to set up these features.

This chapter includes the following sections:

- [Manage port forwarding to a local server](#)
- [Manage port triggering](#)

# Manage port forwarding to a local server

If your home network includes a server, you can allow certain types of incoming traffic to reach the server. For example, you might want to make a local web server, FTP server, or game server visible and available to the Internet.

The router can forward incoming traffic with specific protocols to computers on your local network. You can specify the servers for applications and you can also specify a default DMZ server to which the router forwards all other incoming protocols.

## Set up port forwarding to a local server

### To forward specific incoming protocols:

1. Decide which type of service, application, or game you want to provide.
2. Find the local IP address of the computer on your network that will provide the service.  
The server computer must always use the same IP address. To specify this setting, use the reserved IP address feature. See [Manage reserved LAN IP addresses](#) on page 61.
3. Launch a web browser from a computer or mobile device that is connected to your Orbi network.
4. Enter **orbilogin.com**.  
A login window opens.
5. Enter the admin user name and password.  
The user name is **admin**. The password is the one that you specified the first time that you logged in. The user name and password are case-sensitive.  
The BASIC Home page displays.
6. Select **ADVANCED > Advanced Setup > Port Forwarding/Port Triggering**.  
The Port Forwarding/Port Triggering page displays.
7. Leave the **Port Forwarding** radio button selected as the service type.
8. In the **Service Name** menu, select the service name.  
If the service that you want to add is not in the list, create a custom service. See [Add a custom port forwarding service](#) on page 97.
9. In the **Server IP Address** field, enter the IP address of the computer that will provide the service.
10. Click the **Add** button.



The service displays in the list.

## Add a custom port forwarding service

### To add a custom service:

1. Find out which port number or range of numbers the application uses.  
You can usually find this information by contacting the publisher of the application or user groups or news groups.
2. Launch a web browser from a computer or mobile device that is connected to your Orbi network.
3. Enter **orbilogin.com**.  
A login window opens.
4. Enter the admin user name and password.  
The user name is **admin**. The password is the one that you specified the first time that you logged in. The user name and password are case-sensitive.  
The BASIC Home page displays.
5. Select **ADVANCED > Advanced Setup > Port Forwarding/Port Triggering**.  
The Port Forwarding/Port Triggering page displays.
6. Leave the **Port Forwarding** radio button selected as the service type.
7. Click the **Add Custom Service** button.  
The Ports - Custom Services page displays.
8. In the **Service Name** field, enter a descriptive name.
9. In the **Protocol** menu, select the protocol.  
If you are unsure, select **TCP/UDP**.
10. In the **External Port range** field, enter the port numbers.
11. Specify the internal ports by one of these methods:
  - Leave the **Use the same port range for Internal port** check box selected.
  - Type the port numbers in the **Internal port range** field.
12. Type the IP address in the **Internal IP address** fields or select the radio button for an attached device listed in the table.
13. Click the **Apply** button.  
The service is now in the list on the Port Forwarding/Port Triggering page.

## Edit a port forwarding service

### To edit a port forwarding entry:

1. Launch a web browser from a computer or mobile device that is connected to your Orbi network.
2. Enter **orbilogin.com**.  
A login window opens.
3. Enter the admin user name and password.  
The user name is **admin**. The password is the one that you specified the first time that you logged in. The user name and password are case-sensitive.  
The BASIC Home page displays.
4. Select **ADVANCED > Advanced Setup > Port Forwarding/Port Triggering**.  
The Port Forwarding/Port Triggering page displays.
5. Leave the **Port Forwarding** radio button selected as the service type.
6. In the table, select the radio button next to the service name.
7. Click the **Edit Service** button.  
The Ports - Custom Services page displays.
8. Specify changes to any of the following settings:
  - **Service Name**. Type the service name.
  - **Protocol**. If you are unsure, select TCP/UDP.
  - **External port range**.
  - For the internal ports, leave the **Use the same port range for Internal port** check box selected or enter the ports in the **Internal port range** field.
  - **Internal IP address**. Type the IP address in the **Internal IP address** fields, or select the radio button for an attached device listed in the table.
9. Click the **Apply** button.  
Your settings are saved.

## Delete a port forwarding entry

### To delete a port forwarding entry:

1. Launch a web browser from a computer or mobile device that is connected to your Orbi network.
2. Enter **orbilogin.com**.  
A login window opens.
3. Enter the admin user name and password.  
The user name is **admin**. The password is the one that you specified the first time that you logged in. The user name and password are case-sensitive.  
The BASIC Home page displays.
4. Select **ADVANCED > Advanced Setup > Port Forwarding/Port Triggering**.  
The Port Forwarding/Port Triggering page displays.
5. Select the **Port Forwarding** radio button as the service type.
6. In the table, select the radio button next to the service name.
7. Click the **Delete Service** button.

## Application example: Make a local web server public

If you host a web server on your local network, you can use port forwarding to allow web requests from anyone on the Internet to reach your web server.

### To make a local web server public:

1. Assign your web server either a fixed IP address or a dynamic IP address using DHCP address reservation.  
In this example, your router always gives your web server an IP address of 192.168.1.33.
2. On the Port Forwarding/Port Triggering page, configure the router to forward the HTTP service to the local address of your web server at 192.168.1.33.  
HTTP (port 80) is the standard protocol for web servers.
3. (Optional) Register a host name with a Dynamic DNS service, and specify that name on the Dynamic DNS page of the router.  
Dynamic DNS makes it much easier to access a server from the Internet because you can type the name in the Internet browser. Otherwise, you must know the IP address that the ISP assigned, which typically changes.

## How the router implements the port forwarding rule

The following sequence shows the effects of a port forwarding rule:

1. When you type the URL `www.example.com` in your browser, the browser sends a web page request message with the following destination information:
  - **Destination address.** The IP address of `www.example.com`, which is the address of your router.
  - **Destination port number.** 80, which is the standard port number for a web server process.
2. Your router receives the message and finds your port forwarding rule for incoming port 80 traffic.
3. The router changes the destination in the message to IP address 192.168.1.123 and sends the message to that computer.
4. Your web server at IP address 192.168.1.123 receives the request and sends a reply message to your router.
5. Your router performs Network Address Translation (NAT) on the source IP address, and sends the reply through the Internet to the computer or WiFi device that sent the web page request.

## Manage port triggering

Port triggering is a dynamic extension of port forwarding that is useful in these cases:

- An application must use port forwarding to more than one local computer (but not simultaneously).
- An application must open incoming ports that are different from the outgoing port.

With port triggering, the router monitors traffic to the Internet from an outbound “trigger” port that you specify. For outbound traffic from that port, the router saves the IP address of the computer that sent the traffic. The router temporarily opens the incoming port or ports that you specify in your rule and forwards that incoming traffic to that destination.

Port forwarding creates a static mapping of a port number or range of ports to a single local computer. Port triggering can dynamically open ports to any computer when needed and close the ports when they are no longer needed.

## Add a port triggering service

### To add a port triggering service:

1. Launch a web browser from a computer or mobile device that is connected to your Orbi network.
2. Enter **orbilogin.com**.  
A login window opens.
3. Enter the admin user name and password.  
The user name is **admin**. The password is the one that you specified the first time that you logged in. The user name and password are case-sensitive.  
The BASIC Home page displays.
4. Select **ADVANCED > Advanced Setup > Port Forwarding/Port Triggering**.  
The Port Forwarding/Port Triggering page displays.
5. Select the **Port Triggering** radio button.  
The page adjusts.
6. Click the **Add Service** button.  
The Port Triggering - Services page displays.
7. In the **Service Name** field, type a descriptive service name.
8. In the **Service User** menu, select **Any**, or select **Single address** and enter the IP address of one computer:
  - **Any**. This selection (the default) allows any computer on the Internet to use this service.
  - **Single address**. This selection restricts the service to a particular computer. Enter the IP address in the field that becomes available with this selection from the menu.
9. From the **Service Type** menu, select the service type, either **TCP** or **UDP**.
10. In the **Triggering Port** field, enter the number of the outbound traffic port that must open the inbound ports.
11. From the **Connection Type** menu, select the inbound connection type, **TCP**, **UDP**, or **TCP/UDP**.  
If you are not sure, select **TCP/UDP**.
12. Enter the inbound connection port numbers the **Starting Port**, and **Ending Port** fields.

13. Click the **Apply** button.

The service is now in the Portmap Table.

## Disable port triggering or change the time-out period

By default, port triggering is enabled and a default time-out period is defined. You can disable port triggering or change the time-out period.

### To disable port triggering or change the time-out period:

1. Launch a web browser from a computer or mobile device that is connected to your Orbi network.
2. Enter **orbilogin.com**.  
A login window opens.
3. Enter the admin user name and password.  
The user name is **admin**. The password is the one that you specified the first time that you logged in. The user name and password are case-sensitive.  
The BASIC Home page displays.
4. Select **ADVANCED > Advanced Setup > Port Forwarding/Port Triggering**.  
The Port Forwarding/Port Triggering page displays.
5. Select the **Port Triggering** radio button.  
The page adjusts.
6. To disable port triggering, select the **Disable Port Triggering** check box.  
If this check box is selected, the router does not use port triggering even if you specified port triggering settings.
7. To change the time-out period, in the **Port Triggering Timeout** field, enter a value up to 9999 minutes.  
This value controls how long the inbound ports stay open when the router detects no activity. This value is required because the router cannot detect when the application terminates.

## Application example: Port triggering for Internet Relay Chat

Some application servers, such as FTP and IRC servers, send replies to multiple port numbers. Using port triggering, you can tell the router to open more incoming ports when a particular outgoing port starts a session.

An example is Internet Relay Chat (IRC). Your computer connects to an IRC server at destination port 6667. The IRC server not only responds to your originating source port, but also sends an “identify” message to your computer on port 113. Using port triggering, you can tell the router, “When you initiate a session with destination port 6667, you must also allow incoming traffic on port 113 to reach the originating computer.” The following sequence shows the effects of the port triggering rule you define:

1. You open an IRC client program to start a chat session on your computer.
2. Your IRC client composes a request message to an IRC server using a destination port number of 6667, the standard port number for an IRC server process. Your computer then sends this request message to your router.
3. Your router creates an entry in its internal session table describing this communication session between your computer and the IRC server. Your router stores the original information, performs Network Address Translation (NAT) on the source address and port, and sends this request message through the Internet to the IRC server.
4. Noting your port triggering rule and observing the destination port number of 6667, your router creates another session entry to send any incoming port 113 traffic to your computer.
5. The IRC server sends a return message to your router using the NAT-assigned source port (for example, port 33333) as the destination port. The IRC server also sends an “identify” message to your router with destination port 113.
6. When your router receives the incoming message to destination port 33333, it checks its session table to see if a session is active for port number 33333. Finding an active session, the router restores the original address information replaced by NAT and sends this reply message to your computer.
7. When your router receives the incoming message to destination port 113, it checks its session table and finds an active session for port 113 associated with your computer. The router replaces the message’s destination IP address with your computer’s IP address and forwards the message to your computer.
8. When you finish your chat session, your router eventually senses a period of inactivity in the communications. The router then removes the session information from its session table, and incoming traffic is no longer accepted on port numbers 33333 or 113.

# 8

## Use VPN to Access Your Network

---

You can use OpenVPN software to remotely access your router using virtual private networking (VPN). This chapter explains how to set up and use VPN access.

This chapter includes the following sections:

- [Set up a VPN connection](#)
- [Specify VPN service in the router](#)
- [Install OpenVPN software](#)
- [Use a VPN tunnel on your Windows-based computer](#)
- [Use VPN to access your Internet service at home](#)
- [Block VPN client Internet access in the router](#)
- [Use a VPN tunnel to access your Internet service at home](#)



# Set up a VPN connection

A virtual private network (VPN) lets you use the Internet to securely access your network when you aren't home.

This type of VPN access is called a client-to-gateway tunnel. The computer is the client, and the router is the gateway. To use the VPN feature, you must log in to the router and enable VPN, and you must install and run VPN client software on the computer.

VPN uses DDNS or a static IP address to connect with your router.

To use a DDNS service, register for an account with a host name (sometimes called a domain name). You use the host name to access your network. The router supports these accounts: NETGEAR, No-IP, and Dyn.

If your Internet service provider (ISP) assigned a static WAN IP address (such as 50.196.x.x or 10.x.x.x) that never changes to your Internet account, the VPN can use that IP address to connect to your home network.

## Specify VPN service in the router

You must specify the VPN service settings in the router before you can use a VPN connection.

### To specify the VPN service:

1. Launch a web browser from a computer or mobile device that is connected to your Orbi network.
2. Enter **orbilogin.com**.  
A login window opens.
3. Enter the admin user name and password.  
The user name is **admin**. The password is the one that you specified the first time that you logged in. The user name and password are case-sensitive.  
The BASIC Home page displays.
4. Select **ADVANCED > Advanced Setup > VPN Service**.  
The VPN Service page displays.
5. Select the **Enable VPN Service** check box.  
By default, VPN uses the UDP service type with port number 12973 for TUN mode and port number 12874 for TAP mode. If you want to customize the service type, mode, and port, we recommend that you change these settings before you install the OpenVPN software.

6. To change the TUN mode service type, select the **UCP** or **TCP** radio button.
7. To change the TUN mode service port, type the port number that you want to use in the field.  
The default port number is 12973.
8. To change the TAP mode service type, select the **UCP** or **TCP** radio button.
9. To change the TAP mode service port, type the port number that you want to use in the field.  
The default port number is 12974.
10. Click the **Apply** button.  
Your settings are saved. VPN is enabled in the router, but you must install and set up OpenVPN software on your computer before you can use a VPN connection.

## Install OpenVPN software

You must install this software on each Windows-based computer, Mac computer, iOS device, or Android device that you plan to use for VPN connections to your router.

### Install OpenVPN software on your Windows-based computer

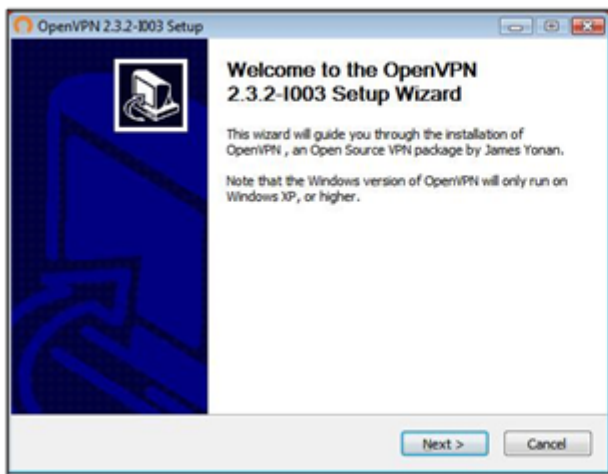
You must install this software on each Windows-based computer that you plan to use for VPN connections to your router.

#### **To install VPN client software on your Windows-based computer:**

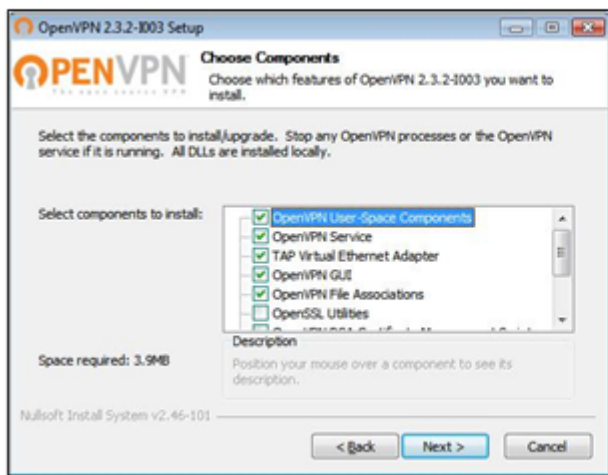
1. Launch a web browser from a computer or mobile device that is connected to your Orbi network.
2. Enter **orbilogin.com**.  
A login window opens.
3. Enter the admin user name and password.  
The user name is **admin**. The password is the one that you specified the first time that you logged in. The user name and password are case-sensitive.  
The BASIC Home page displays.
4. Select **ADVANCED > Advanced Setup > VPN Service**.  
The VPN Service page displays.

## Orbi WiFi 6 Dual-band Mesh System

5. Make sure that the **Enable VPN Service** check box is selected.
6. Specify any VPN service settings on the page.  
For more information, see [Specify VPN service in the router](#) on page 105.
7. Click the **FOR WINDOWS** button to download the OpenVPN configuration files.
8. Visit [openvpn.net/community-downloads/](https://openvpn.net/community-downloads/) to download the OpenVPN client utility.
9. In the Windows Installer section of the page, double-click the **openVPN-install-xxx.exe** link.
10. Download and install the Open VPN software on your computer, click the **openVPN-install-xxx.exe** file.



11. Click the **Next** button.
12. When prompted, read the License Agreement and click the **I Agree** button.



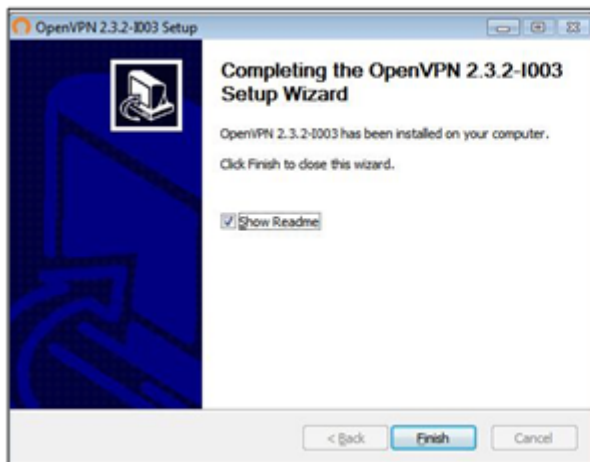
13. Leave the check boxes selected, and click the **Next** button.

- To specify the destination folder, click the **Browse** button and select a destination folder.



- Click the **Install** button.

The window displays the progress of the installation and then displays the final installation page.



- Click the **Finish** button.
- Unzip the configuration files that you downloaded and copy them to the folder where the VPN client is installed on your device.  
For a client device with Windows 64-bit system, the VPN client is installed at C:\Programfiles\OpenVPN\config\ by default.
- For a client device with Windows, modify the VPN interface name to **NETGEAR-VPN**:
  - On your computer, go to the Networks page. If you are using Windows 10, select **Control Panel > Network and Sharing Center > Change adapter settings**.
  - In the local area connection list, find the local area connection with the device name **TAP-Windows Adapter**.
  - Select the local area connection and change its name (not its device name) to **NETGEAR-VPN**.

If you do not change the VPN interface name, the VPN tunnel connection will fail.  
For more information about using OpenVPN on your Windows-based computer, visit <https://openvpn.net/index.php/open-source/documentation/howto.html#quick>.

## Install OpenVPN software on your Mac computer

You must install this software on each Mac computer that you plan to use for VPN connections to your router.

### To install VPN client software on your Mac computer:

1. Launch a web browser from a computer or mobile device that is connected to your Orbi network.
2. Enter **orbilogin.com**.  
A login window opens.
3. Enter the admin user name and password.  
The user name is **admin**. The password is the one that you specified the first time that you logged in. The user name and password are case-sensitive.  
The BASIC Home page displays.
4. Select **ADVANCED > Advanced Setup > VPN Service**.  
The VPN Service page displays.
5. Make sure that the **Enable VPN Service** check box is selected.
6. Specify any VPN service settings on the page.  
For more information, see [Specify VPN service in the router](#) on page 105.
7. Click the **FOR MAC OS X** button to download the OpenVPN configuration files.
8. Visit <https://tunnelblick.net/index.html> to download the OpenVPN client utility for Mac OS X.
9. Download and install the file.
10. Unzip the configuration files that you downloaded and copy them to the folder where the VPN client is installed on your device.  
The client utility must be installed by a user with administrative privileges.  
For more information about using OpenVPN on your Mac computer, visit <https://openvpn.net/vpn-server-resources/installation-guide-for-openvpn-connect-client-on-macos/>.

## Install OpenVPN software on an iOS device

You must install this software on each iOS device that you plan to use for VPN connections to your router.

### To install VPN client software on an iOS device:

1. Launch a web browser from a computer or mobile device that is connected to your Orbi network.
2. Enter **orbilogin.com**.  
A login window opens.
3. Enter the admin user name and password.  
The user name is **admin**. The password is the one that you specified the first time that you logged in. The user name and password are case-sensitive.  
The BASIC Home page displays.
4. Select **ADVANCED > Advanced Setup > VPN Service**.  
The VPN Service page displays.
5. Make sure that the **Enable VPN Service** check box is selected.
6. Specify any VPN service settings on the page.  
For more information, see [Specify VPN service in the router](#) on page 105.
7. Click the **FOR SMART PHONE** button to download the OpenVPN configuration files.
8. On your iOS device, download and install the OpenVPN Connect app from the Apple app store.
9. On your computer, unzip the configuration files that you downloaded and send the files to your iOS device.  
Note that when you open the .ovpn file, a list of apps displays. Select the OpenVPN Connect app to open the .ovpn file.  
For more information about using OpenVPN on your iOS device, visit [http://www.vpngate.net/en/howto\\_openvpn.aspx#ios](http://www.vpngate.net/en/howto_openvpn.aspx#ios).

## Install OpenVPN software on an Android device

You must install this software on each Android device that you plan to use for VPN connections to your router.

**To install VPN client software on an Android device:**

1. Launch a web browser from a computer or mobile device that is connected to your Orbi network.
2. Enter **orbilogin.com**.  
A login window opens.
3. Enter the admin user name and password.  
The user name is **admin**. The password is the one that you specified the first time that you logged in. The user name and password are case-sensitive.  
The BASIC Home page displays.
4. Select **ADVANCED > Advanced Setup > VPN Service**.  
The VPN Service page displays.
5. Make sure that the **Enable VPN Service** check box is selected.
6. Specify any VPN service settings on the page.  
For more information, see [Specify VPN service in the router](#) on page 105.
7. Click the **FOR SMART PHONE** button to download the OpenVPN configuration files.
8. On your Android device, download and install the OpenVPN Connect app from the Google Play Store.
9. On your computer, unzip the configuration files that you downloaded and send the files to your Android device.
10. Open the files on your Android device.
11. Open the .ovpn file using the OpenVPN Connect app.  
For more information about using OpenVPN on your Android device, visit [http://www.vpngate.net/en/howto\\_openvpn.aspx#android](http://www.vpngate.net/en/howto_openvpn.aspx#android).

## Use a VPN tunnel on your Windows-based computer

After you set up the router to use VPN and install the OpenVPN application on your computer, you can open a VPN tunnel from your computer to your router over the Internet.

For the VPN tunnel to work, the local LAN IP address of the remote router must use a different LAN IP scheme from that of the local LAN where your VPN client computer is

connected. If both networks use the same LAN IP scheme, when the VPN tunnel is established, you cannot access your home router or your home network with the OpenVPN software.

The default LAN IP address scheme for the router is 192.x.x.x. The most common IP schemes are 192.x.x.x, 172.x.x.x, and 10.x.x.x. If you experience a conflict, change the IP scheme either for your home network or for the network with the client VPN computer. For information about changing these settings, see [Change the LAN TCP/IP settings](#) on page 57.

### To open a VPN tunnel:

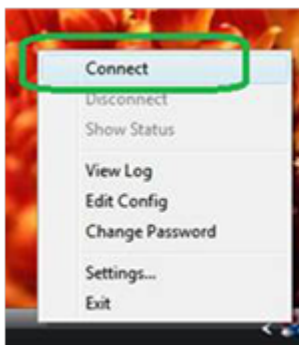
1. Launch the OpenVPN application with administrator privileges.



Figure 5. The OpenVPN icon displays in the Windows taskbar.

TIP: You can create a shortcut to the VPN program, then use the shortcut to access the settings and select the **run as administrator** check box. Then every time you use this shortcut, OpenVPN automatically runs with administrator privileges.

2. Right-click the **OpenVPN** icon.



3. Select **Connect**.

The VPN connection is established. You can launch a web browser and log in to your router.



# Use VPN to access your Internet service at home

When you're away from home and you access the Internet, you usually use a local Internet service provider. For example, at a coffee shop you might be given a code that lets you use the coffee shop's Internet service account to surf the web.

Your Orbi lets you use a VPN connection to access your own Internet service when you're away from home. You might want to do this if you travel to a geographic location that doesn't support all the Internet services that you use at home. For example, your Netflix account might work at home but not in a different country.

## Set up VPN client Internet access in the router

By default, the router is set up to allow VPN connections only to your home network, but you can change the settings to allow Internet access. Accessing the Internet remotely through a VPN might be slower than accessing the Internet directly.

### **To allow VPN clients to use your home Internet service:**

1. Launch a web browser from a computer or mobile device that is connected to your Orbi network.
2. Enter **orbilogin.com**.  
A login window opens.
3. Enter the admin user name and password.  
The user name is **admin**. The password is the one that you specified the first time that you logged in. The user name and password are case-sensitive.  
The BASIC Home page displays.
4. Select **ADVANCED > Advanced Setup > VPN Service**.  
The VPN Service page displays.
5. Select the **Enable VPN Service** radio button.
6. Scroll down to the Clients will use this VPN connection to access section, and select the **All sites on the Internet & Home Network** radio button.  
When you access the Internet with the VPN connection, instead of using a local Internet service, you use the Internet service from your home network.
7. Click the **Apply** button.  
Your settings are saved.

## Block VPN client Internet access in the router

By default, the router is set up to allow VPN connections only to your home network, not to the Internet service for your home network. If you changed this setting to allow Internet access, you can change it back.

### To allow VPN clients to access only your home network:

1. Launch a web browser from a computer or mobile device that is connected to your Orbi network.
2. Enter **orbilogin.com**.  
A login window opens.
3. Enter the admin user name and password.  
The user name is **admin**. The password is the one that you specified the first time that you logged in. The user name and password are case-sensitive.  
The BASIC Home page displays.
4. Select **ADVANCED > Advanced Setup > VPN Service**.  
The VPN Service page displays.
5. Select the **Enable VPN Service** radio button.
6. Scroll down to the Clients will use this VPN connection to access section, and select the **Home Network only** radio button.  
This is the default setting. The VPN connection is only to your home network, not to the Internet service for your home network.
7. Click the **Apply** button.  
Your settings are saved.

## Use a VPN tunnel to access your Internet service at home

### To access your Internet service:

1. Set up the router to allow VPN access to your Internet service.  
See [Specify VPN service in the router](#) on page 105.
2. On your computer, launch the OpenVPN application.  
The OpenVPN icon displays in the Windows taskbar.

3. Right-click the icon and select **Connect**.
4. When the VPN connection is established, launch your Internet browser.

# 9

## Troubleshooting

---

This chapter provides information to help you diagnose and solve problems you might experience with your Orbi router or satellite. If you do not find the solution here, check the NETGEAR support site at [netgear.com/support](http://netgear.com/support) for product and contact information.

This chapter includes the following sections:

- [Quick tips](#)
- [The router and satellite do not sync](#)
- [You cannot log in to the router](#)
- [You cannot access the Internet](#)
- [Troubleshoot Internet browsing](#)
- [Troubleshoot PPPoE](#)
- [Troubleshoot WiFi connectivity](#)
- [Troubleshoot your network using the ping utility](#)

## Quick tips

This section describes tips for troubleshooting some common problems.

### Sequence to restart your network

When you restart your network, follow this sequence:

1. Turn off and unplug the modem.
2. Turn off the router.
3. Plug in the modem and turn it on.  
Wait two minutes.
4. Turn on the router and wait two minutes.

### WiFi settings

Make sure that the WiFi settings in the WiFi-enabled computer or mobile device and the router match.

The WiFi network name (SSID) and WiFi security settings must match exactly.

If you set up an access list, you must add each WiFi-enabled computer or mobile device's MAC address to the router's access list.

### Network settings

Make sure that the network settings of the computer are correct. Wired and wirelessly connected computers must use network (IP) addresses on the same network as the router. The simplest way to do this is to configure each computer to obtain an IP address automatically using DHCP.

Some cable modem service providers require you to use the MAC address of the computer initially registered on the account. You can view the MAC address on the Attached Devices page.

## The router and satellite do not sync

If you are experiencing difficulty syncing the router and the satellite, we recommend that you move the satellite into the same room as the router during the sync. Then move the satellite to a different location.

### To sync the router and the satellite:

1. Place the satellite in the same room as the Orbi router.  
Use this satellite location only during the sync process.
2. Connect the satellite to a power source.
3. Wait for the satellite LED to light solid white or magenta.
4. Press the **Sync** button on the router and then within two minutes, press the **Sync** button on the satellite.
5. Wait for the satellite to light.  
The satellite LED pulses white while it attempts to sync with the router. After the LED pulses white, it lights one of the following colors:
  - **Blue.** The Orbi router and satellite successfully synced, and the connection between the router and satellite is good.
  - **Amber.** The Orbi router and satellite failed to sync. Try repeating Step 4 again. If the sync keeps failing, try moving the satellite to a different location that's closer to the router.
6. Move the satellite to a new location and connect the satellite to a power source.
7. At the new location, check the satellite LED and make sure it lights blue.  
If the satellite LED lights blue, the satellite synced successfully. If the satellite LED lights amber, move the satellite closer to the router and try again. The satellite must be within range of the router's WiFi cover area for a good connection to the router.

## You cannot log in to the router

Make sure that your computer or mobile device is connected to the Orbi WiFi network. If you do not want to use a WiFi connection, you can connect your computer to the Orbi router with an Ethernet cable.

If you changed the admin password and you forgot what it is, see [Reset the admin password](#) on page 82.

# You cannot access the Internet

Check your network and Internet connections:

1. Make sure that your WiFi-enabled computer or mobile device is connected to the Orbi network.
2. If you are connected to Orbi but you cannot access the Internet, check to see if your Internet connection is working.
3. Launch a web browser from a computer or WiFi device that is connected to the network.
4. Enter **orbilogin.com**.  
A login window opens.
5. Enter the router admin user name and password.  
The user name is **admin**. The default password is **password**. The user name and password are case-sensitive.  
The BASIC Home page displays.
6. Click the **ADVANCED** tab.  
The ADVANCED Home page displays.
7. Check that an IP address is shown for the Internet port.

If 0.0.0.0 is shown, your router did not obtain an IP address from your Internet service provider (ISP).

If your router cannot obtain an IP address from the ISP, you can force your cable or DSL modem to recognize your new router by restarting your network. For more information, see [Sequence to restart your network](#) on page 117.

If your router is still unable to obtain an IP address from the ISP, the problem might be one of the following:

- Your Internet service provider (ISP) might require a login program. Ask your ISP whether they require PPP over Ethernet (PPPoE) or some other type of login.
- If your ISP requires a login, the login name and password might be set incorrectly.

- Your ISP might check for your computer's host name. Assign the computer host name of your ISP account as the account name on the Internet Setup page.
- If your ISP allows only one Ethernet MAC address to connect to Internet and checks for your computer's MAC address, do one of the following:
  - Inform your ISP that you bought a new network device and ask them to use the router's MAC address.
  - Configure your router to clone your computer's MAC address.

## Troubleshoot Internet browsing

If your router can obtain an IP address but your computer is unable to load any web pages from the Internet, it might be for one of the following reasons:

- The traffic meter is enabled, and the limit was reached.  
By configuring the traffic meter not to block Internet access when the traffic limit is reached, you can resume Internet access. If your ISP sets a usage limit, they might charge you for the overage.
- Your computer might not recognize any DNS server addresses. A DNS server is a host on the Internet that translates Internet names (such as www addresses) to numeric IP addresses.  
Typically, your ISP provides the addresses of one or two DNS servers for your use. If you entered a DNS address during the router's configuration, restart your computer. Alternatively, you can configure your computer manually with a DNS address, as explained in the documentation for your computer.
- The router might not be configured as the default gateway on your computer.  
Reboot the computer and verify that the router address ([www.orbilogin.com](http://www.orbilogin.com)) is listed by your computer as the default gateway address.
- You might be running login software that is no longer needed. If your ISP provided a program to log you in to the Internet, you no longer need to run that software after installing your router. You might need to go to Internet Explorer and select **Tools > Internet Options**, click the **Connections** tab, and select **Never dial a connection**. Other browsers provide similar options.



# Troubleshoot PPPoE

If you are using PPPoE, try troubleshooting your Internet connection.

## To troubleshoot a PPPoE connection:

1. Launch a web browser from a computer or WiFi device that is connected to the network.
2. Enter **orbilogin.com**.  
A login window opens.
3. Enter the router admin user name and password.  
The user name is **admin**. The default password is **password**. The user name and password are case-sensitive.  
The BASIC Home page displays.
4. Click the **ADVANCED** tab.  
The ADVANCED Home page displays.
5. In the Internet Port pane, click the **Connection Status** button.  
The Connection Status window opens.
6. Check the Connection Status window to see if your PPPoE connection is active and working.  
If the router is not connected, click the **Connect** button.  
The router continues to attempt to connect indefinitely.
7. If you cannot connect after several minutes, the router might be set up with an incorrect service name, user name, or password, or your ISP might be experiencing a provisioning problem.  
Unless you connect manually, the router does not authenticate using PPPoE until data is transmitted to the network.

# Troubleshoot WiFi connectivity

If you are experiencing trouble connecting to the Orbi WiFi network, try to isolate the problem:

- Can your WiFi-enabled computer or mobile device that you are using find your WiFi network?

- Does your WiFi-capable device support the security that you are using for your WiFi network (WPA3, WPA2, or WPA)?
- To view the WiFi settings for the router, use an Ethernet cable to connect a computer to an Ethernet port on the router. Then log in to the router, and select **BASIC > Wireless**.

**Note:** Be sure to click the **Apply** button if you change settings.

- If you are trying to connect to the 5 GHz WiFi band, does your WiFi-enabled computer or mobile device support this standard?
- Did your computer or WiFi device automatically connect to a different WiFi network in your area, such as a WiFi hotspot?

## Troubleshoot your network using the ping utility

Most network devices and routers contain a ping utility that sends an echo request packet to the designated device. The device then responds with an echo reply. You can easily troubleshoot a network using the ping utility in your computer or workstation.

### Test the LAN path to your router

You can ping the router from your computer to verify that the LAN path to your router is set up correctly.

#### To ping the router from a Windows computer:

1. From the Windows toolbar, click the **Start** button and select **Run**.
2. In the field provided, type **ping** followed by the IP address of the router, as in this example:  
**ping www.orbilogin.com**
3. Click the **OK** button.

You should see a message like this one:

#### **Pinging <IP address > with 32 bytes of data**

If the path is working, you see this message:

**Reply from < IP address >: bytes=32 time=NN ms TTL=xxx**

If the path is not working, you see this message:

### Request timed out

If the path is not functioning correctly, you might be experiencing one of the following problems:

- Wrong physical connections  
Check that the appropriate LEDs are on for your network devices. If your router and computer are connected to a separate Ethernet switch, make sure that the link LEDs on the switch are lit for the switch ports that your computer and router are connected to.
- Wrong network configuration  
Verify that the Ethernet card driver software and TCP/IP software are both installed and configured on your computer.  
Verify that the IP address for your router and your computer are correct and that the addresses are on the same subnet.

### Test the path from your computer to a remote device

After verifying that the LAN path works correctly, test the path from your computer to a remote device.

#### To test the path from your computer to a remote device:

1. From the Windows toolbar, click the **Start** button and select **Run**.
2. In the Windows Run window, type:

**ping -n 10** <IP address>

where <IP address> is the IP address of a remote device such as your ISP DNS server.

If the path is functioning correctly, messages display that are similar to those shown in [Test the LAN path to your router](#) on page 122.

If you do not receive replies, check the following:

- Check to see that the IP address of your router is listed as the default gateway for your computer. If DHCP assigns the IP configuration of your computers, this information is not visible in your computer Network Control Panel. Verify that the IP address of the router is listed as the default gateway.
- Check to see that the network address of your computer (the portion of the IP address specified by the subnet mask) is different from the network address of the remote device.
- Check to see that your cable or DSL modem is connected and functioning.

## Orbi WiFi 6 Dual-band Mesh System

- If your ISP assigned a host name to your computer, enter that host name as the account name on the Internet Setup page.
- Your ISP might be rejecting the Ethernet MAC addresses of all but one of your computers.

Many broadband ISPs restrict access by allowing traffic only from the MAC address of your broadband modem. Some ISPs additionally restrict access to the MAC address of a single computer connected to that modem. If your ISP does this, configure your router to “clone” or “spoof” the MAC address from the authorized computer.

# A

## Factory Settings and Technical Specifications

---

This appendix covers the following topics:

- [Factory settings](#)
- [Technical specifications](#)

# Factory settings

You can return your Orbi router or satellite to its factory settings. Use the end of a paper clip or a similar object to press and hold the **Reset** button on the back of the router or satellite for at least seven seconds until the router or satellite LED blinks. The router or satellite resets, and returns to the factory settings.

## Factory settings for Orbi router model RBR350

The following table shows the factory default settings for Orbi router model RBR350.

Table 6. Router factory default settings

Feature	Default Setting
<b>Router web interface login</b>	
Login URL	orbilogin.com
Login user name (case-sensitive)	admin
Default login password (case-sensitive)	password
<b>Internet connection</b>	
WAN MAC address	Use default hardware address
WAN MTU size	1500
Port speed	Autosensing
<b>Local network (LAN)</b>	
LAN IP	192.168.1.1
Subnet mask	255.255.255.0
DHCP server	Enabled
DHCP range	192.168.1.2 to 192.168.1.254
DHCP starting IP address	192.168.1.2
DHCP ending IP address	192.168.1.254
DMZ	Disabled

## Orbi WiFi 6 Dual-band Mesh System

Table 6. Router factory default settings (Continued)

Feature	Default Setting
Time zone	GMT for WW GMT -8 for NA and CN GMT +10 for AU GMT +9 for KO GMT +8 for PR GMT +5:30 for IN
Time zone adjusted for daylight saving time	Disabled
SNMP	Disabled
<b>Firewall</b>	
Inbound (communications coming in from the Internet)	Disabled
Outbound (communications going out to the Internet)	Enabled (all)
Source MAC filtering	Disabled
<b>WiFi</b>	
WiFi communication	Enabled
SSID name	See router label
Security	WPA2-PSK (AES)
Broadcast SSID	Enabled
Transmission speed	Auto <b>Note:</b> Maximum wireless signal rate derived from IEEE Standard 802.11 specifications. Actual throughput can vary. Network conditions and environmental factors, including volume of network traffic, building materials and construction, and network overhead, lower actual data throughput rate.
Country/region	United States of America; otherwise, varies by region
RF channel 2.4 GHz fronthaul	Auto
RF channel 2.4 GHz backhaul	Auto

Table 6. Router factory default settings (Continued)

Feature	Default Setting
RF channel 5 GHz fronthaul	NA and PR: Channel 157 WW and JP: Channel 108
RF channel 5 GHz backhaul	NA and PR: Channel 157 WW and JP: Channel 108

## Factory settings for Orbi satellite model RBS350

The following table shows the factory default settings for Orbi satellite model RBS350.

Table 7. Satellite factory default settings

Feature	Default Setting
<b>Satellite web interface login</b>	
Login URL	IP address of the satellite
Login user name (case-sensitive)	admin
Default login password (case-sensitive)	password
<b>Internet connection</b>	
WAN MAC address	Use default hardware address
WAN MTU size	1500
Port speed	Autosensing
<b>Local network (LAN)</b>	
LAN IP	192.168.1.250
Subnet mask	255.255.255.0
DHCP server	Disabled
DMZ	Disabled
Time zone	GMT for WW GMT -8 for NA and CN GMT +10 for AU GMT +9 for KO GMT +8 for PR GMT +5:30 for IN



## Orbi WiFi 6 Dual-band Mesh System

Table 7. Satellite factory default settings (Continued)

Feature	Default Setting
Time zone adjusted for daylight saving time	Disabled
SNMP	Disabled
<b>Firewall</b>	
Inbound (communications coming in from the Internet)	Enabled (all)
Outbound (communications going out to the Internet)	Enabled (all)
Source MAC filtering	Disabled
<b>WiFi</b>	
WiFi communication	Enabled
SSID name	See satellite label
Security	WPA2-PSK (AES)
Broadcast SSID	Enabled
Transmission speed	Auto <b>Note:</b> Maximum wireless signal rate derived from IEEE Standard 802.11 specifications. Actual throughput can vary. Network conditions and environmental factors, including volume of network traffic, building materials and construction, and network overhead, lower actual data throughput rate.
Country/region	United States of America; otherwise, varies by region
RF channel 2.4 GHz fronthaul	Auto
RF channel 2.4 GHz backhaul	Auto
RF channel 5 GHz fronthaul	NA and PR: Channel 157 WW and JP: Channel 108
RF channel 5 GHz backhaul	NA and PR: Channel 157 WW and JP: Channel 108

# Technical specifications

The following are the technical specifications for your Orbi router and satellite

## Technical specifications for Orbi router model RBR350

The following table shows the technical specifications for Orbi router model RBR350.

Table 8. Router technical specifications

Feature	Description
Data and routing protocols	TCP/IP, RIP-1, RIP-2, DHCP, PPPoE, PPTP, Bigpond, Dynamic DNS, UPnP, and SMB
Power adapter	North America: 120V, 60 Hz, input UK, Australia: 240V, 50 Hz, input Europe: 230V, 50 Hz, input All regions (output): 12V, 3.5A DC output
Dimensions	5.7 x 7.0 x 2.4 in. (144.78 x 177.8 x 60.96 mm)
Weight	1.46 lb (662.24 g)
Operating temperature	0° to 40°C (32° to 104°F)
Operating humidity	90% maximum relative humidity, noncondensing
Electromagnetic emissions	FCC Part 15, Subpart B, Class B IECS-003, Class B EN 55032, EN 55035, Class B AS/NZS CISPR 32, Class B
LAN	Compatible with 10BASE-T, 100BASE-TX, 1000BASE-T, RJ-45
WAN	Compatible with 10BASE-T, 100BASE-TX, 1000BASE-T, RJ-45
WiFi	Maximum wireless signal rate complies with the IEEE 802.11 standard. <b>Note:</b> Maximum wireless signal rate derived from IEEE Standard 802.11 specifications. Actual throughput can vary. Network conditions and environmental factors, including volume of network traffic, building materials and construction, and network overhead, lower actual data throughput rate.
Radio data rates	2.4 GHz: Max. 600 Mbps 5 GHz: Max 1200 Mbps
Data encoding standards radio 1	IEEE 802.11b/g/n/ax 2.4GHz–1024-QAM support
Data encoding standards radio 2	IEEE 802.11a/n/ac/ax 5GHz–1024-QAM support

## Orbi WiFi 6 Dual-band Mesh System

Table 8. Router technical specifications (Continued)

Feature	Description
Maximum number of computers per wireless network	Limited by the amount of WiFi network traffic generated by each node (typically 50-70 nodes) 2.4 GHz: 127 5 GHz (fronthaul): 127
2.4 GHz operating frequency range	2.412-2.472 GHz (Europe ETSI, Japan, and China) 2.412-2.462 GHz (US)
5 GHz operating frequency range	5.18-5.24 GHz and 5.745-5.825 GHz (US and China) 5.18-5.24 GHz and 5.5-5.7 GHz (Europe and Japan)
802.11 security	WPA2-PSK [AES] WPA-PSK [TKIP] + WPA2-PSK [AES] WPA3-Personal [SAE]

## Technical specifications for Orbi satellite model RBS350

The following table shows the technical specifications for Orbi satellite model RBS350.

Table 9. Satellite technical specifications

Feature	Description
Data and routing protocols	TCP/IP and DHCP
Power adapter	North America: 120V, 60 Hz, input UK, Australia: 240V, 50 Hz, input Europe: 230V, 50 Hz, input All regions (output): 12V, 1.5A DC output
Dimensions	5.7 x 7.0 x 2.4 in. (144.78 x 177.8 x 60.96 mm)
Weight	1.17 lb (530.703 g)
Operating temperature	0° to 40°C (32° to 104°F)
Operating humidity	90% maximum relative humidity, noncondensing
Electromagnetic emissions	FCC Part 15, Subpart B, Class B IECS-003, Class B EN 55032, EN 55035, Class B AS/NZS CISPR 32, Class B
LAN	Compatible with 10BASE-T, 100BASE-TX, 1000BASE-T, RJ-45

## Orbi WiFi 6 Dual-band Mesh System

Table 9. Satellite technical specifications (Continued)

Feature	Description
WiFi	Maximum wireless signal rate complies with the IEEE 802.11 standard. <b>Note:</b> Maximum wireless signal rate derived from IEEE Standard 802.11 specifications. Actual throughput can vary. Network conditions and environmental factors, including volume of network traffic, building materials and construction, and network overhead, lower actual data throughput rate.
Radio data rates	2.4 GHz: Max. 600 Mbps 5 GHz: Max 1200 Mbps
Data encoding standards radio 1	IEEE 802.11b/g/n/ax 2.4GHz–1024-QAM support
Data encoding standards radio 2	IEEE 802.11a/n/ac/ax 5GHz–1024-QAM support
Maximum number of computers per wireless network	Limited by the amount of WiFi network traffic generated by each node (typically 50–70 nodes) 2.4 GHz: 127 5 GHz (fronthaul): 127
2.4 GHz operating frequency range	2.412–2.472 GHz (Europe ETSI, Japan, and China) 2.412–2.462 GHz (US)
5 GHz operating frequency range	5.18–5.24 GHz and 5.745–5.825 GHz (US and China) 5.18–5.24 GHz and 5.5–5.7 GHz (Europe and Japan)
802.11 security	WPA2-PSK [AES] WPA-PSK [TKIP] + WPA2-PSK [AES] WPA3-Personal [SAE]