



User Manual

Intelligent Fingerprint Door Locks

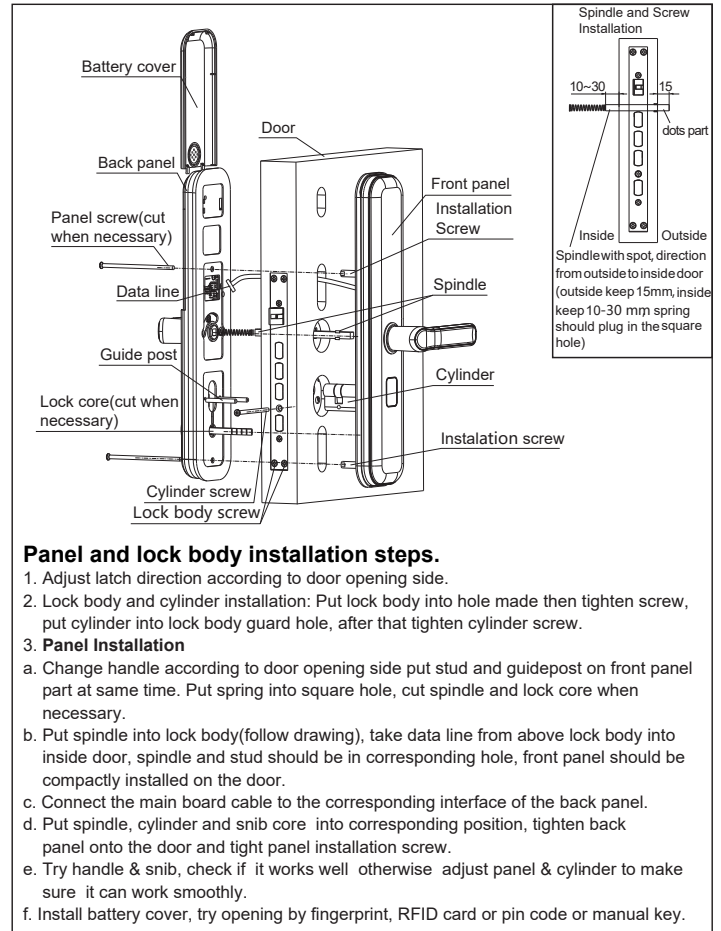
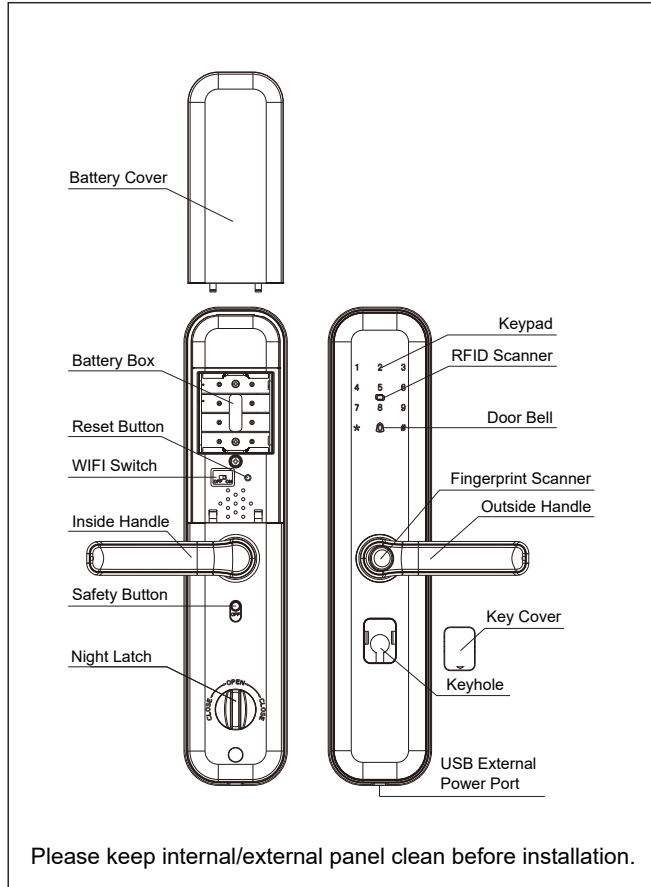
FL100



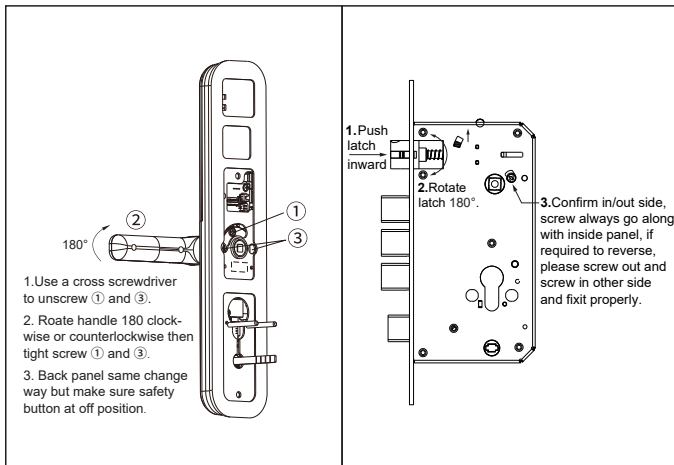
Fingerprint Sensor

www.esslsecurity.com

Product Layout:



Change Handle Direction



Product Features:

- Multiple way to access: Fingerprint, Pin Code, RFID Card, & Mechanical Key.
- Fingerprint: Advanced semiconductor sensors with 360° scanner.
- Pin code Elegant keypad with code scrambling feature. Before correct password can input 12 digital which can avoid password peeping.
- Dual authentication mode: Fingerprint mode (master + common user), fingerprint + pin code, fingerprint + RFID card mode. After this setting dual authentication will be required to access the lock at same time to open the door, suitable for special occasions.
- Lock can have multiple access users capacity: Fingerprint (5 Master Users & 85 Normal Users), Pin-code (5 Master Users & 15 Normal Users), RFID cards (99 Normal Users)
- Alarm: Tamper, low battery alarm and password protection.
- External power supply: Can use power bank with 5V for emergency power supply.

Remark:

1. After installation of lock please reset lock to factory default mode.
2. After factory default mode make sure to register 1 master user.
3. The handle is the key part for opening and closing door, and its flexibility ratio directly influences the usage of door lock, hence, don't hang articles on handle.
4. Gently press fingerprint on the fingerprint sensor for registration of fingerprint. Please don't press with great force to prevent scratching the fingerprint sensor.
5. This lock uses 4 AA high-energy alkaline batteries (1.5V). When it prompts" the voltage is low, please replace battery" for the first time, the door can be opened for about 100 times as per different battery capacities; At this time, the battery should be replaced promptly to avoid inconvenience due to the exhausted battery.

User Addition:

1. **Reset factory default:** Press RESET at back of lock for 5 seconds, voice will prompt reset succeed.
2. **Register master/user:**
 - 2.1 **Initial mode:** Touch screen key pad for lights on and press # for 2 seconds and voice prompts additions of master code.
 - 2.2 **Once master user is added:**
 - a. Add new master: Touch screen for lights on and press # for 2 seconds, voice prompts confirm master, input any registered master and press # again to add master user (fingerprint /password)
 - b. Add new common user: Touch screen for lights on and press # for 2 seconds input any registered master user "and" voice prompts "add user" to add new fingerprint, password and card etc.
 3. Addition of "One Time password or Guest password": Users can be added for with password access which will provided access one time and will expire after its used.

Remark:

1. All fingerprint need to scan 3 times for addition.
2. Password is of 8 digit and has to be entered 2 times for addition.
3. Card is registered after voice prompts "add user" & scan card near RFID scanner for confirmation.
4. After successful registration press * to exit.

3. Delete registered fingerprint/card/password:

- 3.1. **Deleting individual fingerprint:** Touch screen for lights on & long press 1 for 2 seconds. After voice prompts input fingerprint to delete, press fingerprint on scanner to delete.
- 3.2. **Deleting by user numbers:** Touch screen for lights on & long press 1 for 2 seconds. After voice prompts input fingerprint code to delete enter user number of fingerprint to delete.
- 3.3. **Delete all cards:** Touch screen for lights on & long press 2 for 2 seconds press # to enter in to delete all cards option and # again to confirm deletion.
- 3.4. **Delete corresponding password:** Touch screen for lights on & long press 4 for 2 seconds at this time input password code and press # to confirm.
- 3.5. **Delete all password:** Touch screen for lights on & long press 4 for 2 seconds press # to delete all passwords.

Remark:

1. When Deleting fingerprint, one master user in fingerprint has to be left.
2. When keypad light is off use "0" as door bell.

4. Checking lock information:

Touch screen for lights on 2 long press 0 for 2 seconds:

Press 1 To open with any registered user.

Press 2 For dual authentication with fingerprint.

Press 3 For fingerprint + password opening.

Press 4 For fingerprint + card opening.

Press 5 To get the lock storage status: Number of master users, number of normal users, for fingerprint, RFID & Pin code access.

Press 6 To get the lock series information: XXXXXXXX

Press 7 For rest factory default and # to confirm.



#24, Shambavi Building, 23rd Main, Marenahalli, JP Nagar 2nd Phase, Bengaluru - 560078

Phone : 91-8026090500 | Email : sales@esslsecurity.com

www.esslsecurity.com