

Network Video Recorder (NVR) Quick Setup Guide



Issue : 1.0

Precautions

Fully understand this document before using this device, and strictly observe rules in this document when using this device. If you install this device in public places, provide the tip "You have entered the area of electronic surveillance" in an eye-catching place. Failure to correctly use electrical products may cause fire and severe injuries.

	Warnings It alerts you to moderate dangers which, if not avoided, may cause minor or moderate injuries.
	Caution It alerts you to risks. Neglect of these risks may cause device damage, data loss, device performance deterioration, or unpredictable results.
	Note It provides additional information.

WARNINGS:

- Strictly observe installation requirements when installing the device. The manufacturer shall not be held responsible for device damage caused by users' non-conformance to these requirements.
- Strictly conform to local electrical safety standards and use power adapters that are marked with the LPS standard when installing and using this device. Otherwise, this device may be damaged.
- Use accessories delivered with this device. The voltage must meet input voltage requirements for this device.
- If this device is installed in places with unsteady voltage, ground this device to discharge high energy such as electrical surges to prevent the power supply from burning out.

If this device is in use, ensure that no water or any liquid flows into the device. If water or liquid unexpectedly flows into the device, immediately power off the device and disconnect all cables (such as power cables and network cables) from this device.

- Do not focus strong light (such as lighted bulbs or sunlight) on this device. Otherwise, the service life of the image sensor may be shortened.
- If this device is installed in places where thunder and lightning frequently occur, ground the device nearby to discharge high energy such as thunder strikes to prevent device damage.

CAUTION:

- Avoid heavy loads, intensive shakes, and soaking to prevent damages during transportation and storage. The warranty does not cover any device damage that is caused during secondary packaging and transportation after the original packaging is taken apart.

- Protect this device from fall-down and intensive strikes, keep the device away from magnetic field interference, and do not install the device in places with shaking surfaces or under shocks.

- Clean the device with a soft dry cloth. For stubborn dirt, dip the cloth into slight neutral cleanser, gently wipe the dirt with the cloth, and then dry the device.

- Do not jam the ventilation opening. Follow the installation instructions provided in this document when installing the device.

- Keep the device away from heat sources such as radiators, electric heaters, or other heat equipment.

- Keep the device away from moist, dusty, extremely hot, or cold places, or places with strong electric radiation.

- If the device is installed outdoors, take insect- and moisture-proof measures to avoid circuit board corrosion that can affect monitoring.

- Remove the power plug if the device is idle for a long time.

Special Announcement

- All complete products sold by the manufacturer are delivered along with name plates, a quick setup guide and accessories after strict inspection. The manufacturer shall not be held responsible for counterfeit products.

- The manufacturer will update this manual according to product function enhancement or changes and regularly update the software and hardware described in this manual. Update information will be added to new versions of this manual without prior notice.

- This manual may contain misprints, technology information that is not accurate enough, or product function and operation description that is slightly inconsistent with the actual product, the final interpretation of company is as a standard.

- This manual is only for reference and does not ensure that the information is totally consistent with the actual product. For consistency, see the actual product.

NOTE

For more information, please refer to the website.

1 Open Package Examination

Open the package, check the appearance of product for no obvious damage, and confirm the item list for table 1-1 is consistent.

Table 1.1 Packing List

Component	Quantity	Remarks
Earthing Wire	1	
HDD Screw	4	
Mouse	1	
Power Adapter	1	
Manual	1	

2 Device Structure

2.1 Device Ports

NOTE

Different Device may have different ports and multi head cables, please refer to the actual product.

Front Panel Description of the device, please refer table 2.1.

Rear panel description device, please refer to the table 2.2

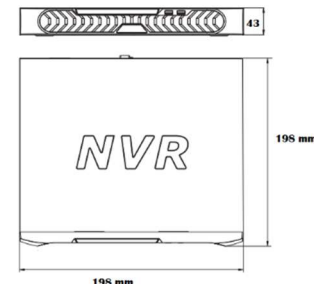
Table 2.2 Rear Panel descriptions

Port Name	Description
AUDIO	Use for Audio interface.
VGA	Both VGA & HDMI ports
HDMI	Supports Video output interface.
LAN	RJ45 10/100 Mbps adaptive ethernet
USB	Support connection to a USB mouse and keyboards.
	12 V DC Connected to an external power adapter

2.2 Device Dimensions

NOTE

Different device may have different dimensions, please refer to the actual product.



3 Device Installation

The hard disk of the NVR must be provided by the user. Disconnect the power from the NVR before installing a hard disk drive. Take the following steps to install hard disks:

NOTE

Please install the hard disk fixing screws on the screw's holes far away from the power supply interface

Step 1. Remove the cover from the NVR by unfastening the screws on the back and side .

Step 2. Route the Screws through the holes on the base, push the hard disk to the appropriate position on the left.

Step 3 . Turn over the machine and fasten the screws on the button to fix the HDD.

Step 4. Install other hard disks following step 2, Step 3 and Step 4 and insert the hard disk data cable and power cable , then put on the upper cover and fasten the fixing screws.

4 Quick Configuration (e.g IE)

4.1 Startup

Before starting NVR, ensure that the NVR is connected to a power supply properly and a monitor is connected to the HDMI or VGA interface of the NVR correctly. NVR will automatically power on when it is connected to a power supply. The startup process takes about 2 minutes.

Caution

In some environments, if the power supply is abnormal the NVR may not work properly . In severe cases, the NVR may be changed. In these environments, you are advised to use regulated power supply.

4.2 System Login

When the NVR is started, the power indicator becomes steady on, and you will see the Guide Security Steps which includes :-

Step 1. Set the password and security levels.

Step 2. Able to set pattern passwords.

Step 3 Input some security questions .

Now a QR code interface will show for iOS, Android & SN, Scan for more details or skip as per the requirement.

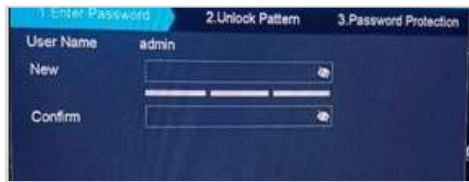
Set the date and time format & synchronize with system.

Note : You can skip the above steps & these settings can be done anytime from the NVR configuration menu.

After completing these steps, you will get the pop message of boot wizard guide & setup wizard . Now press OK & right click , select Main Menu to jump into the System Login page as shown in the **figure 4.2**.

5 Quick Configuration (e.g., IE)

Figure 4.2 System Login



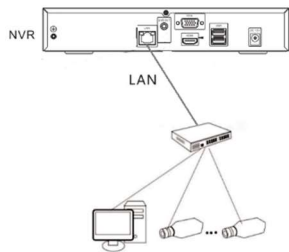
NOTE

- The default username is admin. Customer have to set the password when using the camera for the first time to ensure system security.

4.3 Adding IP Cameras

A network includes other network devices in addition to IP cameras and NVR. The topology of a network can be organized freely so long as NVR and IP cameras can communicate with each other smoothly.

Figure 4.3 Topology of a Network



When a network is used, the user needs to manually search for and add IP cameras.

The NVR is embedded with a web server and supports Mainstream browsers such as Internet Explorer, Chrome, Firefox, and Safari. Operations such as configuration, real time preview, video playback, alarm search, NVR setup, and camera setup can be performed through the web.

Open the Internet Explorer, enter the IP address of the NVR in the address box, and press enter. The login page is displayed as shown in the figure 5.

Figure 5. Login Page



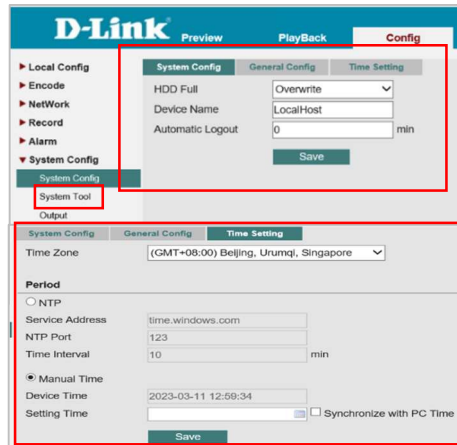
5.1 Configuration

Configuration provides Local Configuration, Encode, Network, Net services, Record, Store Management, Alarm, System Configuration, System Information, as shown in figure 5.1.

5.1.1 NVR Setup

- NVR system configuration : You can set the device name and device time of the NVR.
- You can sync camera time manually and automatically. If the manual mode is selected, please enable the "Synchronize with PC time."

Figure 5.1 Configuration



- System Tools : To add and modify the user you need to click on the Add user button and set username, password, & group. You can also give multiple authority options to the users.
- NVR Network Configuration : You can enable the DHCP & set the IP address, subnet mask, default gateway, DNS address of the NVR.
- There is one more option in the network configuration which is Net Service. Set the different protocols according to requirement in the Net Services.
- Record : Three options, Alarm, Detect & Regular are available to record a video. Set the channel, Length, and schedule for video recording.
- System Info : All the information such as system version, Web version, Mac address, Nat Status is available in the System Info options.

5.1.2 Camera Setup

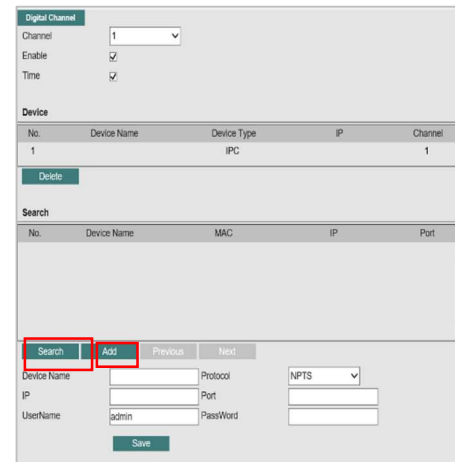
Go to the **Config >>System Config>>Camera>>Digital Channel**.

Camera Search & Add : To search a camera please click on the search option, you will see the device type, device name, IP address & channel name of the IP camera.

- To add camera, you need to input the Device Name, Port IP address, Username and Password and then click on the save. After that you will see that the camera is added as shown in the figure 5.1.2
- To show the time title and channel title, go to the encode option, select channel where you want to change and then

click on save.

Figure 5.1.2 Camera Search & Add



5.2 Live Video (Preview)

- To browse a real time video, click preview. A list of channels is displayed in the left side, click in the camera. Select Mainstream and Sub stream accordingly.
- To view the camera in full screen please double click in the channel as per the need.
- Pan, Tilt and Zoom options displayed in the right side of the screen. You can also set Preset & Point cruise in the PTZ (Preview) section.
- Please see all the above Live video points in figure 5.2.

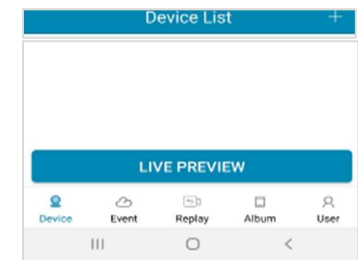
Figure 5.2 Live Video



6 Mobile Phone App

Mobile Phone App supports IOS, Android System, Search **D-Link Vision** in the play store and download it. Select the "+" to add devices and you can be able to perform more operation, Device manage, Event, Replay, User, Live Preview as shown in the figure 6.1.

Figure 6.1 Mobile Phone App



7 Appendix: Hazardous Substance Declaration

Component	Hazardous Substance or Element					
	Pb (mg/kg)	Mercury (Hg)	Cadmium (Cd)	Hexavalent Chromium (Cr6+)	Polybrominated Biphenyls (PBB)	Polybrominated Diphenyl Ethers (PBDE)
Structural Part	x	0	0	0	0	0
Board/Circuit Module	x	0	0	0	0	0
Cable connector	x	0	0	0	0	0
Accessories	x	0	0	0	0	0

NOTE

0: Indicates that the concentration of the hazardous substance in all the homogeneous substances of the component is within the limit specified in SJ/T 1163-2006 requirements for the concentration Limits for certain Hazardous Substance in Electronic Information Products.

x: Indicates that the concentration of the hazardous substance in at least one homogeneous substances of the component exceeds the limit specified in SJ/T 1163-2006 requirements for the concentration Limits for certain Hazardous Substance in Electronic Information Products.